

REPAIR CATALOG



YOUR CONNECTION
TO EARTH



INDEX

Style Number	Style Name	Page
SOLID SOLES		
100	Montagna	12
100	Montagna Heel	12
109	Logger	13
127	Athletic	13
132	Montagna	14
134AR	Technical Lug	14
148	Kletterlift	15
171C	Marmaloda	15
232	Mini-Lug	16
268	Dress	16
269	Westerner	17
342C	Mini Ripple	18
430	Oil-Resisting	19
430	Oil-Resisting Heel	19
417K	Flat	20
625K	Predator	20
669KS	Skull	21
700	Tygun	22
7335	Brown Cork (Core) Heel	22
700	V-Bar (Washer) Heel	22
Q732	Freestone	23
885K	New Boulder	23
1014	Teton	24
1030	Izalco	24
1136	Roccia	25
1149	Montagna	25
1249	Mister Tank	26
1275	Olympia	26
1276	Sierra	27
1286	Tacoma Logger	27
1318	Alpha+	28
1328	Elvis	28
1330	Newporter	29
1374	Baltimore Wide	29
1375	Bifda	30
1442	Friedrich	31
1443	Zegama	32
1474S	Zegama	33
1685	Mombello	33
2074	New York	34
2055S	Eton Sole	35
2055S	Eton Heel	35
2094	Lienz	36
2900	Acqua	37
ARCTIC GRIP		
S1219	Brush Tap half Sole	40
S1219	Brush Toplift	40

Style Number	Style Name	Page
ARCTIC GRIP (continued)		
S1244	Yellow	41
S1319	Christy Flat	41
MIDSOLES		
7500	Midsole	44
BLOWN SOLES		
377K	Christy	47
516K/516NB	Long Haul	48
528K	Roccia Newflex	49
810K	Bologna	50
1012	Silvato	51
S1559	Ripple	51
1705	Stowe	52
1716	Oxford	52
1743W	Bologna	53
1752	Stockbridge	53
1757	Middlebury	54
1758	Stalker	54
2021	Casual	55
2060	Sport	55
2062	Olympic	56
950B	Christy Camp Moc	56
2070	Scooter	57
984K	Scooter	57
2345	Line-Lite	58
2602	Desert Boot	58
4007	Basketweave	59
4014	Cristy	59
HALF SOLES		
705	Tygun	62
700	Tygun Heel	62
2332	Lug	62
5722 / 5723	Lug Heel	62
2336	Tapered	63
5350 / 5351	Top Tacco	63
2340	Explosion	63
5340	Explosion Toplift	63
2341	Raptor	64
5341	Raptor Toplift	64
2724	Oil-Resisting	64
430	Oil-Resisting Heel	64
2324	Mirror	65
5324	Mirror	65
2725	Fine Line	65
2726	Fine Line	65
2028	Richard	66
3349	Marzia	66

Style Number	Style Name	Page
HEELS		
100	Montagna (Washer)	69
430	Oil-Resisting (Washer)	69
438	Cowboy (Washer)	70
468	Comfort Cushion (Core)	70
700	V-Bar (Washer)	71
700C	V-Bar Elongated (Washer)	71
7335	Brown Cork (Core)	71
TOPLIFTS		
516KH	Long Haul	74
5324	Mirror	74
5340	Explosion	74
5341	Raptor	74
5350	Top Tacco	75
5351	Top Tacco	75
5362	Boston	75
5363	Boston	75
5722	Lug	76
5723	Lug	76
PROTECTIVE SOLING		
2673	Protania	79
7673	Protania	79
7373	Protania	80
ROCK CLIMBING		
7130	New Boulder	83
7507	XS Grip	83
7509	Grip Marchiata	84
7509	XS Flash	84
7510	Grip	85
7520	XS Grip 2	86
7530	XS Edge	86
SHEETS		
650	Silvano	89
7106	Gum Crepe Sheet	89
7120	XS City Sheet	90
7166Q	Toplift	90
7170	Lisk	91
7175	Cherry	91
7279	Dupla	92
7663	Tequilgemma	92
8102	Morflex® Pyramid	93
8102	Morflex® Suede	93
8327	Woodstock Sheet	94
8529	Sport Utility	94
8868	Super Newflex	95
8870	Newflex	95



A LEGEND IN EVERY CORNER OF THE WORLD

Vibram is the **world leader** in the production of **high performance rubber soles** for the sports, industrial, leisure, orthopedic, and repair markets.

In 1935, Italian Alpine Club member **Vitale Bramani** was part of an expedition on Resica Mountain where six climbers lost their lives, due in part to their low-quality footwear. Upon his return, Bramani had the **brilliant idea of prototyping a vulcanized rubber sole** with help from the rubber experts at the Pirelli Tire Company. This breakthrough, along with the design of the **Carrarmato Sole**, revolutionized **mountain climbing** and the footwear world. Thus, Vibram was born.

The **Vibram name is an acronym of its founder's name, Vitale Bramani**. Over the last 75 years, Vibram has been committed to developing an extensive range of **high-performance soling products** for a wide variety of activities and lifestyles. Thanks to ongoing investments in research and development, Vibram has cultivated an international reputation synonymous with **quality, performance, and safety**.

*Vitale Bramani,
Italian mountaineer and inventor of the Vibram sole*

VIBRAM AND REPAIRS

Since the mid-1950s, Vibram has also been a leading player in developing products designed for the shoe repair market. Every year, Vibram creates soling products with unique designs and compounds specifically intended for repairing all types of footwear. Every day, all over the world, thousands of shoemakers put their trust in Vibram products to guarantee the best results for their customers.



Vibram is headquartered in Albizzate, Italy. With corporate offices in Boston, Massachusetts and production facilities located in North Brookfield, Massachusetts, Vibram has long been recognized as the leader in high performance soles. Vibram soles are used in extreme conditions such as firefighting, mining, and gas and oil exploration. Vibram soles are engineered to meet the rigorous standards of each industry. That same dedication toward performance is put into the soles, heels, toplifts, and sheet products that are produced specifically for the outdoor and casual footwear markets. With a global network of production facilities, Vibram takes great pride in our rich history of Made in America; Vibram has been producing soles in the US since 1964 and proudly provides soles to every branch of the US Military.

The Vibram Technology Center (VTC) is home to a state-of-the-art research and development center, along with an impressive 12,000 square foot Performance Test Center (PTC). Equipped with climbing walls, ice room, rain simulation, articulating and fixed pitch ramps and many other simulated environmental conditions, the PTC is designed and equipped to ensure that our products are thoroughly tested in a variety of conditions.



VIBRAM HEADQUARTERS—ALBIZZATE, ITALY



VIBRAM TECHNOLOGY CENTER—GUANGZHOU, CHINA



VIBRAM FACILITY—NORTH BROOKFIELD, MASSACHUSETTS, USA



VIBRAM PERFORMANCE

Each new Vibram product is designed for a particular use and engineered to meet three objectives: **performance, comfort, and durability**. The secret to **Vibram performance** lies in the combination of an innovative, functional **design**, and the **compounds** we use.



VIBRAM DESIGN

Vibram designers are not only **experts in appearance**, they are **technical experts** trained to evaluate the characteristics each sole needs to have for its intended use. Vibram designers also work in close collaboration with the **Vibram Tester Team**. Our designers use the Tester Team's feedback when designing new product for specific applications. Designers also collaborate with many **biomechanical research institutes** in order to identify new lines, volumes, and forms, all with the goal of developing functional and comfortable soles while ensuring top performance.



VIBRAM COMPOUNDS

Not one compound is suitable for all physical activities. However, these key characteristics are common to most uses:

- **Resistance** to wear, which is defined as abrasion resistance.
- **Softness**, which is defined as hardness. Vibram compounds offer a wide range of hardness levels. All levels have excellent wear resistance.

COMPOUND	SUGGESTED ADHESIVE	HARDNESS (SHORE A)	ABRASION
SBR (359 cmpd)	Neoprene (All Purpose)	70-80	150 min NBS
Fire & Ice	Urethane + Primer	57-67	120 min NBS
TC4	Neoprene (All Purpose)	55-65	120 min NBS
TC1	Neoprene (All Purpose)	55-65	120 min NBS
Nitrile (329 cmpd)	Neoprene (All Purpose)	70-80	90 min NBS
SP	Neoprene (All Purpose)	64-70	<140 DIN
SO	Neoprene (All Purpose)	90-94	<180 DIN
MS	Neoprene (All Purpose)	74-80	<130 DIN
Top85	Neoprene (All Purpose)	82-88	<100 DIN
Idrogrip	Urethane + Primer	70-76	<250 DIN
Mont	Neoprene (All Purpose)	75-81	<110 DIN
XS Edge	Urethane + Primer	75-81	<250 DIN
Grip	Urethane + Primer	72-78	<250 DIN
XS Grip	Urethane + Primer	67-73	<230 DIN
Megagrip	Neoprene (All Purpose)	66-72	<150 DIN
Gumlite	Neoprene (All Purpose)	N/A	N/A
Morflex	Neoprene (All Purpose)	N/A	N/A
Newflex	Neoprene (All Purpose)	47-55	<150 DIN
Super Newflex	Neoprene (All Purpose)	26-34	<200 DIN
Vi-Lite	Neoprene (All Purpose)	40	<180 DIN

Disclaimer: These are suggested adhesives, results may differ



TESTED WHERE IT MATTERS

Before Vibram products reach the market, they are all tested using strict quality controls. We carry out these tests in our SATRA-certified laboratories by certified technicians or directly in the field by the Vibram Tester Team.

Every Vibram sole has to pass **three levels of testing** to guarantee that the product quality meets the end consumer's requirements.

STAGE 1 – LABORATORY TESTS

Laboratory tests are necessary to determine the physical-mechanical characteristics of a compound (resistance to slip, abrasion, elasticity, hardness, density, etc.). These tests can be carried out both on soles and sheet samples.



- density
- hardness
- abrasion
- nominal stress at break
- elongation at break
- tear resistance
- isooctane resistance
- electrical resistance, antistatic
- ESD
- resistance to heat by contact
- flame resistance
- peeling test



Vibram® Bio-Abrader
Abrasion Resistance



Cylindrical Drum
Abrasion Resistance (ISO 4649)



Densimeter
Density
(ISO 2781)



Dynamometer
Tensile Stress-Strain (ISO 037)
Tear Strength (ISO 034-1)



Durometer
Hardness
(ISO 868)



Peeling
Lamination strength
(EN 12774)

Vibram designed and developed DYCO (dynamic compression system). DYCO is a test machine and test method proprietary to Vibram S.p.A.



VIBRAM DYCO (dynamic compression system)

An innovative cushioning test, to study the cushioning performance of its products, by subjecting them to different levels of stress intended to simulate actual use.

Vibram® Dyco
Cushioning

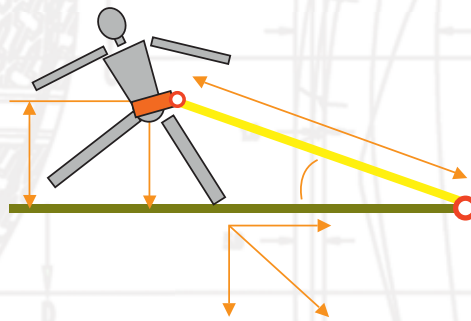
STAGE 2 – IN VIVO TESTS

In addition to extensive laboratory testing, soles are also tested with Vibram In-Vivo test protocols. Vibram In-Vivo test methods have been designed and developed to replicate real world usage of Vibram products.

Tests for attributes such as “static grip” use the proprietary MAX TRACTION MERIDIAN test protocols.

MAX TRACTION MERIDIAN property of Vibram SpA

These tests are intended to illustrate the differences between specific sole design and compound pairings, and allow for the calculation of each pairing’s static coefficient of friction.



STAGE 3 – FIELD TESTS



The third and final stage of Vibram testing is field testing conducted by the Vibram Tester Team. Testing is performed in situations which duplicate both intended and extreme uses. The tester team conducts “blind” tests, taking every product to the limit of its specific use. During this stage, testers compare the design and compounds of different products without the knowledge of the particulars. Once testing is complete, only the best products will be approved for production and launched into the market.



TEST CENTER





CERTIFIED SAFETY AND QUALITY

REACH



The REACH system – set up by the European Union – is a system for the Registration, Evaluation, Authorization, and restriction of CHemicals for the purpose of improving the safeguarding of human health and the environment. By better identifying the intrinsic properties of chemicals, REACH also contributes to maintaining competition and strengthening the spirit of innovation of the chemical industry in Europe.

Vibram is the first company to work in full compliance with all REACH criteria. Vibram also has a policy to work only with raw material suppliers who comply with these same criteria.

SATRA



SATRA, the leading worldwide research center for footwear technology, research and development, provides its support and expertise in all stages of product development, from initial research to the evaluation of materials and components, up to and including testing and certification, guaranteeing the highest levels of quality.

Vibram boasts close daily collaboration with SATRA. The Vibram Technological Center in China and our USA manufacturing facility both have SATRA certification.

Conformity Declaration: RS10_12
Issued for Customer:

"VIBRAM RESTRICTED SUBSTANCES POLICY"

Company VIBRAM S.p.A., of Via C. Colombo, n. 5, - 20141 Albizzate (VA) - Italy, hereby states and guarantees

- its products are manufactured, supplied and shipped strictly abiding by EU Regulation and domestic law;
- its products are properly manufactured with specific qualities, technical and economical characteristics requested by the governing EU Regulation and domestic law abiding by health and environmental law, consumers and shoes customers protection law providing restrictions related to introducing into the market or using restricted substances and specifically related to:

- EU Directive 2002/61/CE European Parliament and Council 19 July 2002, 19 amendment to EU directive 76/769/CEE EU Council related to introducing into the market or using any restricted substances;
- EU Directive 2002/21/CE, as amended, related to the achievement of goals and standards about ecological quality of shoes;
- Article 33 of REACH further to the publication of the candidate list according to Article 59 of REACH on 25/10/2008;
- the proper enforcement of rules, technical and scientific principles to guarantee the complete observance of health integrity, health care, consumer and product safety policy, and in general, the environment and population health protection

In particular, Vibram S.p.A. verifies and guarantees that its own products (in whole parts) do not contain (exceeding the quantity provided by EU regulation and domestic law) none of the substances listed in the enclosed "Annex A" that is a fundamental part of this declaration.

Regarding REACH, Vibram supplies "article" and REACH applies, for the registration of substances in articles (e.g. manufactured goods such as car, textiles, electronic chips), a special regime.

Articles (e.g. manufactured goods such as car, textiles, electronic chips) that are intended to be released from articles during normal and reasonably foreseeable conditions of use" and Vibram supplies products that "are not intended to release substances during normal conditions of use"

Albizzate (VA), 19 September 2012

VIBRAM S.p.A.
Quality Director

Property of Vibram S.p.A. - Strictly Confidential

pag. 1/2

Conformity Declaration: RS10_12
Issued for Customer:

Annex A
Product Restricted Substance List

Substance	Limit
Metals (soluble)	see below (*)
in VI	< 3 ppm
	< 75 ppm
Phenols	< 50 ppm (*)
Resins (C18-Cl12)	< 50 ppm
Resins	< 1000 ppm
Resins	< 20 ppm
and their ethoxylates	< n.d. (*)
Spreads (stannic)	< 1000 ppm
Octadecyl sulfonates	< 1 ppm
Resins	< 1 µg/m2
Resins	< 20 ppm
Resins	< 5 ppm
Resins	< n.d. (*)
Resins	< 500 ppm
Resins	< 200 ppm

Resins: < 20. Following ZEK 01-08 for GS-Mark certification for Category 3

Resins: Hg < 0.02 ppm; As < 0.2 ppm; Cu < 25 ppm

Resins: 4-chloro-o-toluenic, 2-naphthylamine, o-amino-azotoluene, 2-amino-4-
line, 2,4-diaminotoluene, 4,4'-diaminodiphenylmethane, 3,3'-
p-cresidine, 4,4'-dimethylbenzidine, 3,3'-dimethyl-4,4'-
2,4-diaminotoluene, 2,4,5-trimethylamine, 4-aminobenzene, o-aminidine

Flame retardants (g.g. penta BDE, octa BDE, TRIS, PBB, TCEP), TEPA
EA, NDPA, NDPA, NPP, NPP, NPP, NMOR, NMPA, NEPA
EHP, DHP, BHP, DBP

Property of Vibram S.p.A. - Strictly Confidential

pag. 2/2

RELIED UPON BY SOME OF THE MOST DEMANDING PROFESSIONALS



LAW ENFORCEMENT



FIRE



MILITARY

Vibram proudly provides soles to law enforcement officers, firefighters, and the military. These individuals place as much trust in their boots as they do in the rest of their gear. Vibram soles enable safe, confident passage over challenging terrain. They help protect the men and women who keep our country strong.

Vibram soles are made for performance and durability. They provide all-around reliability by guaranteeing maximum traction and superior stability on a variety of terrains, including wet and cold surfaces. Vibram's Fire & Ice compound is flame resistant, and is engineered to withstand extreme temperature ranges.



SOLID SOLES

SOLID SOLES

Built for the most demanding environments and activities, Vibram solid soles are designed for maximum grip, durability and traction. With trimmable soles of various compounds and lug design, our solid replacement soles are the perfect option for full sole repair.

- High abrasion resistance
- Trimmable
- Superior traction

Uses include:

- Industrial
- Mountaineering
- Outdoor sport
- Military
- Firefighting footwear

Style:

- Rugged
- Casual





100 MONTAGNA



The sole that conquered Mt. Everest remains the quality soling choice for rugged outdoor wear.



Honey Black

COMPOUND

SBR and
Fire & Ice

SIZES

8
9
10
11
12
13
14
(Black)

8
10
12
14
(Honey)

THICKNESS

22 iron
11.6 mm



USE WITH HEEL

100 MONTAGNA HEEL



Honey Black

COMPOUND

SBR and
Fire & Ice

SIZES

9
10
11
12
13
14
15
16
18
(Black)

10
12
14
16
(Honey)

THICKNESS

42 iron
22.2 mm



Note: White lug denotes Fire & Ice compound

109 LOGGER



Rugged outdoor lug sole that incorporates a logger heel.



Black

COMPOUND

SBR

SIZES

8
10
12

THICKNESS

24 iron
forepart
84 iron
heel
12.7 mm
forepart
44.4 mm
heel



Outdoor Sport Mountaineering

127 ATHLETIC



Long-wearing sport and walking sole for footwear with an athletic flair.



Black

COMPOUND

SBR

SIZES

10
12
14

THICKNESS

7.5 iron
forepart
9.5 iron
heel
4 mm
forepart
5.3 mm
heel



Casual Outdoor Sport



132 MONTAGNA



The sole that conquered Mt. Everest remains the quality soling choice for rugged outdoor wear. Available in a one piece design.



Black

COMPOUND

SBR

SIZES

8
9
10
11
12
14

THICKNESS

19 iron
forepart
51 iron
heel
10.1 mm
forepart
27 mm
heel



Industrial



Mountaineering



Casual

134AR TECHNICAL LUG



Award winning sole and a benchmark of quality for performance sport boots.



Black

COMPOUND

SBR

SIZES

10
12
14

THICKNESS

24 iron
forepart
54 iron
heel
12.7 mm
forepart
28.6 mm
heel



Industrial



Casual



Mountaineering

148 KLETTERLIFT



Classic lug sole. Also available in wide for orthopedic applications.



Black

COMPOUND

SBR

SIZES

8
10
12
14

THICKNESS

15 iron
8 mm

SPECIAL

Also available in wide (148w)



171C MARMALODA



Multi-function outsole that has excellent traction and wearability. Can be used in outdoor or casual applications.



White

Red

Amber

COMPOUND

XS Trek

SIZES

6.5/7.5
8/11
11.5/13
13.5/15

THICKNESS

17 iron
forepart
30 iron
heel
15.9 mm
forepart
9.0 mm
heel



Casual



232 MINI-LUG



Designed for rugged and leisure outdoor casuals.



Black

COMPOUND

SBR

SIZES

8

10

12

14

THICKNESS

14 iron
forepart

38 iron
heel

7.4 mm
forepart

20 mm
heel



Industrial



Mountaineering



Outdoor Sport



Military

268 DRESS



Long wearing dress comfort sole.



Neutral

COMPOUND

SBR

SIZES

10

12

14

THICKNESS

12 iron
6.4 mm



Casual

269 WESTERNER



Mini rib pattern.



Black

COMPOUND

Nitrile

SIZES

12
14

THICKNESS

12 iron
6.4 mm



Casual



Fashion





342C MINI RIPPLE



Flat outsole for use in sandals and casual footwear. Compound provides grip on wet and dry surfaces.



Camo

Red

White

Black

Grigio

COMPOUND

Mega Grip

SIZES

7.5
9
10.5
12.5

THICKNESS

14 iron
7.4 mm



Casual



430 OIL-RESISTING



Features a refined lug medallion ideal for work and industrial footwear.



Black

COMPOUND

Nitrile

SIZES

10
12
14

THICKNESS

14 iron
7.4 mm



Industrial

Casual

USE WITH HEEL

430 OIL-RESISTING HEEL



COMPOUND

Nitrile

SIZES

10
12
14

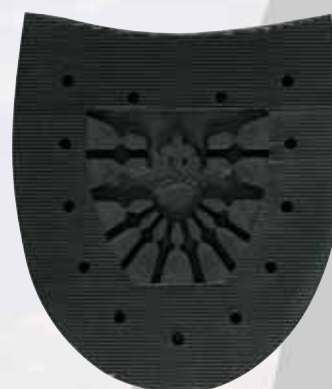
THICKNESS

36 iron
19 mm



Industrial

Casual



Black



417K FLAT

Ideal design for orthopedic and athletic applications.



Black/
Gum Black White

COMPOUND

XS City

SIZES

6
9
13

THICKNESS

7 iron
3.5 mm



Casual

625K PREDATOR

Outstanding for hiking and work applications. Compound provides excellent grip and wearability.



Black/
Gum Black

COMPOUND

XS Trek

SIZES

6
8
10
12

THICKNESS

12 iron
6.4 mm



Outdoor Sport

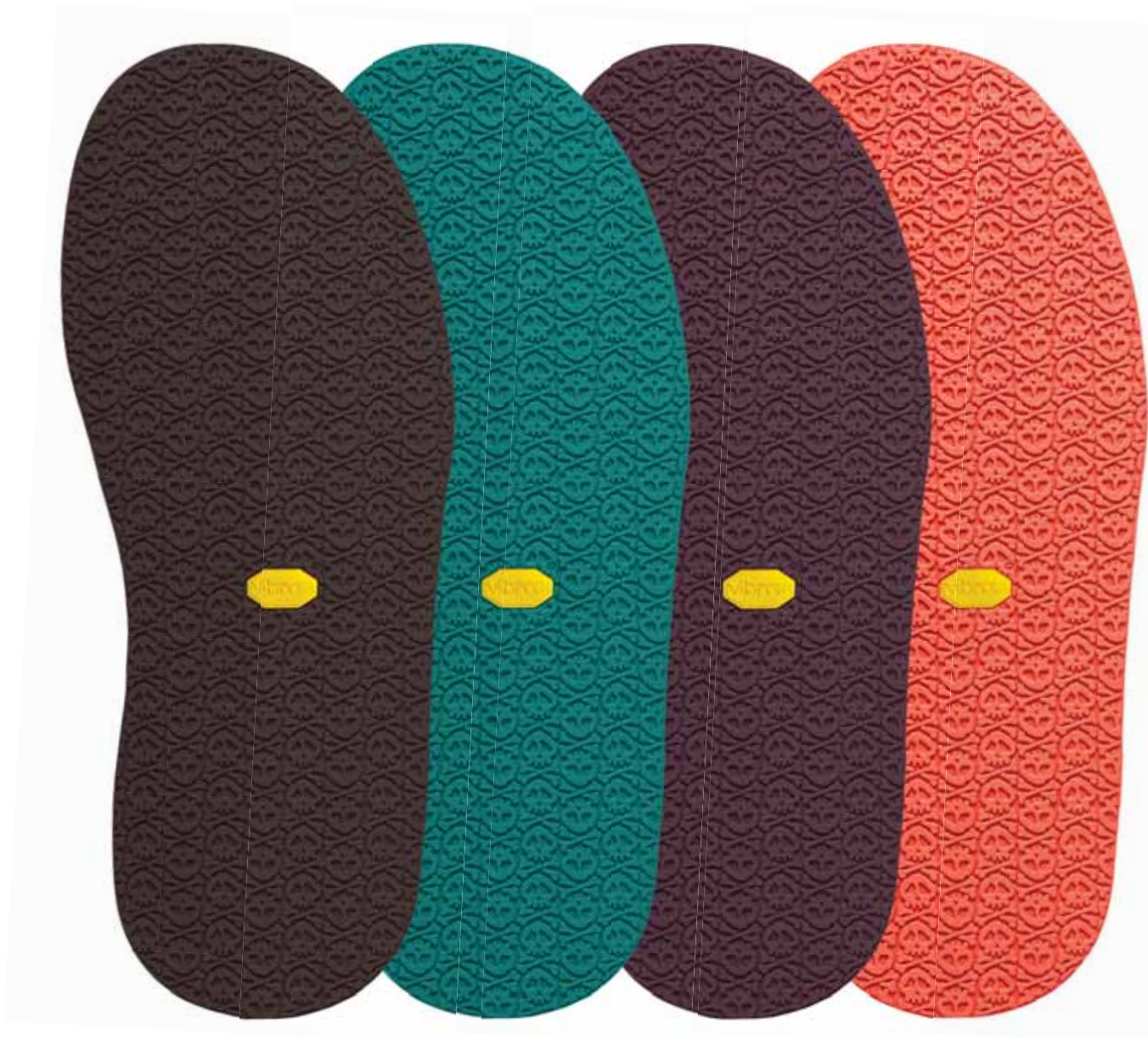


Trekking

669KS SKULL



Flat outsole for use in athletic, casual and orthopedic applications. Great grip on wet and dry surfaces.



Black

Gachala

Norma

Rosso



COMPOUND

Mega Grip

SIZES

9
13

THICKNESS

7 iron
3.5 mm



Casual



700 TYGUM



Features a traditional chevron pattern ideal for work/industrial footwear.



Brown
Cork

Black

COMPOUND

Nitrile
(Black)

Cork
(Brown)

SIZES

10
12
14

THICKNESS

14 iron
7.4 mm



Industrial



Casual

USE WITH HEEL

7335 BROWN CORK (CORE) HEEL



Brown
Cork

COMPOUND

Cork

SIZES

33
35
37

THICKNESS

36 iron
19 mm



Industrial



Casual

700 V-BAR (WASHER) HEEL



Black

COMPOUND

Nitrile

SIZES

12
14

THICKNESS

36 iron
19 mm



Industrial



Casual

Q732 FREESTONE



Vibram IdroGrip compound and 360° lug make this sole ideal for use in wet, mossy wading environments.



Black

COMPOUND

IdroGrip

SIZES

13

THICKNESS

11 iron
5.8 mm

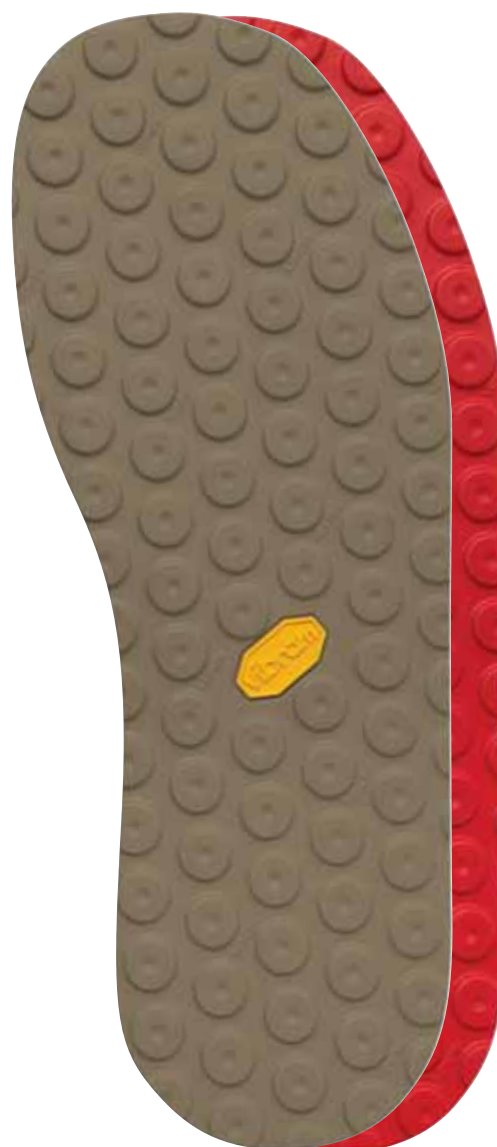


Outdoor Sport

885K NEW BOULDER



Flat outsole for use in sandals and casual footwear. Compound provides grip on wet and dry surfaces.



Grigio

Red

COMPOUND

Mega Grip

SIZES

6
9.5
13

THICKNESS

8 iron
4.2 mm



Casual



Outdoor Sport



1014 TETON



A rubber blocker sole featuring the classic Vibram Teton lug mountaineering design, provides maximum grip with excellent resistance to wear. This is a marking sole.



Black

COMPOUND

MONT

SIZES

412
434
456

THICKNESS

17.4 iron
forepart
20.8 iron
heel
9.5 mm
forepart
11 mm
heel



1030 IZALCO



Designed for use on work and casual footwear.



Black

COMPOUND

SP

SIZES

401
423
445

THICKNESS

10 iron
5.5 mm



1136 ROCCIA



Excellent alternative replacement for outdoor or casual footwear.



Black

COMPOUND

SBR

SIZES

10
11.5
13

THICKNESS

15 iron
forepart
45 iron
heel
8 mm
forepart
23.8 mm
heel



Industrial



Mountaineering



Outdoor Sport

1149 MONTAGNA



The sole that conquered Mt. Everest remains the quality soling choice for rugged outdoor wear.



Black Honey Red

COMPOUND

Mega Grip

SIZES

356
378
390
412
434
456
478

THICKNESS

22 iron
forepart
54 iron
heel
11.6 mm
forepart
28.6 mm
heel



Outdoor Sport



Casual



1249 MISTER TANK



Recycled materials are used in this sole. Excellent for casual footwear.



Brown Eco Step

COMPOUND

Eco Step

SIZES

7.5
9.5
11.5
13.5

THICKNESS

22 iron
forepart
54 iron
heel
11.6 mm
forepart
28.6 mm
heel



Casual

1275 OLYMPIA



Multi-directional leading edges and broad outer lugs to enhance slip-resistance, grip, and stability everywhere you step.



Black

COMPOUND

SBR

SIZES

8
10
12
14

THICKNESS

21 iron
forepart
53 iron
heel
11.2 mm
forepart
28 mm
heel



Industrial



Mountain/heeling



Outdoor Sport

1276 SIERRA



For rugged, industrial, outdoor, and military footwear.



Camel Black

COMPOUND

Nitrile

SIZES

8
10
12
14

THICKNESS

18 iron
9.6 mm



Industrial



Mountaineering



Outdoor Sport



Military

1286 TACOMA LOGGER



Technical, self-cleaning sole designed for use on outdoor footwear.



Black

COMPOUND

SBR

SIZES

10
11
12

THICKNESS

24 iron
forepart
84 iron
heel
12.7 mm
forepart
44.4 mm
heel



Outdoor Sport



Mountaineering



1318 ALPHA+



This oil and heat-resisting sole is ideal for industrial applications. Grooves in the heel help disperse fluids for added traction and raised ladder grips help maintain proper footing.



Black

COMPOUND
TC4

SIZES
10
12
14

THICKNESS
14 iron forepart
40 iron heel
7.4 mm forepart
21 mm heel

 
Industrial Outdoor Sport

1328 ELVIS



Ideal design for orthopedic and athletic applications.



Tan White Black

COMPOUND
TC4

SIZES
6/8
9/10
11/13

THICKNESS
10 iron
5.3 mm

 
Industrial Casual


Outdoor Sport

1330 NEWPORTER



Provides outstanding slip-resisting characteristics. Recommended for the food service industry. Also available in wide for orthopedic applications.



Black

COMPOUND

TC4

SIZES

4/5
6/8
9/10
11/13
15

THICKNESS

12 iron
6.4 mm

SPECIAL

Also available in wide (1330w)



Industrial

Casual

1374 BALTIMORE WIDE



Multifunction sole for casual and appropriate orthopedic applications.



Black

COMPOUND

TC1

SIZES

6/8
9/10
11/13

THICKNESS

15 iron
8 mm



Casual



1375 BIFIDA



Provides excellent traction on wet/dry surfaces and various terrain. It was created for use in hiking and outdoor applications.



Black

COMPOUND

SBR

SIZES

37
38
39
40
41
42
43
44
45
46
47.5
48.5

THICKNESS

Cup Sole



Industrial



Mountaineering



Outdoor Sport

1442 FRIEDRICH



Excellent for resoling athletic and casual footwear. Outstanding wear characteristics.



Black

Hazelnut

Flint

Dk. Brown

COMPOUND

Trek

SIZES

424
502

THICKNESS

7 iron
3.7 mm



Casual



Groundbreaking Grip

UNPARALLELED PERFORMANCE ON ALL
TERRAIN IN WET AND DRY CONDITIONS.



MEGAGRIP

ALL-TERRAIN. ALL CONDITIONS.

Vibram MEGAGRIP offers excellent grip properties on both dry and wet terrains while maintaining a higher level of durability. Developed for the user who frequently encounters slippery surfaces, Vibram MEGAGRIP is suitable for trekking and multisport as well as all season hiking and travel.

- Unparalleled grip on wet and dry surfaces
- Rugged longevity
- Optimal ground adaptability



Trail Running



Approach



Mountainbike



Hiking



Sport Hiking



Water Sports

1443 ZEGAMA



Excellent for resoling of road- and trail-running shoes.
Superior grip on wet and dry surfaces.



Black

COMPOUND

Megagrip

SIZES

8
10
12
14

THICKNESS

11.5 iron
6 mm



Sport Hiking

1474S ZEGAMA



Excellent for resoling off-road and trail running shoes.
Superior grip on wet and dry surfaces.



Norma Gachala Rosso

COMPOUND

Megagrip

SIZES

424
458
491

THICKNESS

8 iron
forepart

12 iron
heel

4.2 mm
forepart

6.4 mm
heel



Sport Hiking

1685 MOMBELLO



Designed for motorcycle boot repairs. Provides durability and traction on all kinds of surfaces. This is a marking sole.



Black

COMPOUND

MONT

SIZES

7/8
9/10
11/13

THICKNESS

9 iron
forepart

41.6 iron
heel

5 mm
forepart

22 mm
heel



Off Road



Cycling



2074 NEW YORK



Excellent for resoling off-road and trail running shoes. Superior grip on wet and dry surfaces.



COMPOUND

Megagrip

SIZES

6
8
10
12

THICKNESS

10 iron
forepart

12 iron
heel

5.3 mm
forepart

6.4 mm
heel



Outdoor Sport



Trekking



Casual

2055S ETON



Ideal for casual shoes. XS City provides outstanding grip and performance.



Black Grigio Norma

COMPOUND

XS City

SIZES

5/6
7/8
9/10
11/12
13/14

THICKNESS

11 iron
forepart
10 iron
heel
5.8 mm
forepart
5.3 mm
heel



Casual

USE WITH HEEL

2055S ETON



Black Grigio Norma

COMPOUND

XS City

SIZES

5/6
7/8
9/10
11/12
13/14

THICKNESS

16 iron
8.5 mm



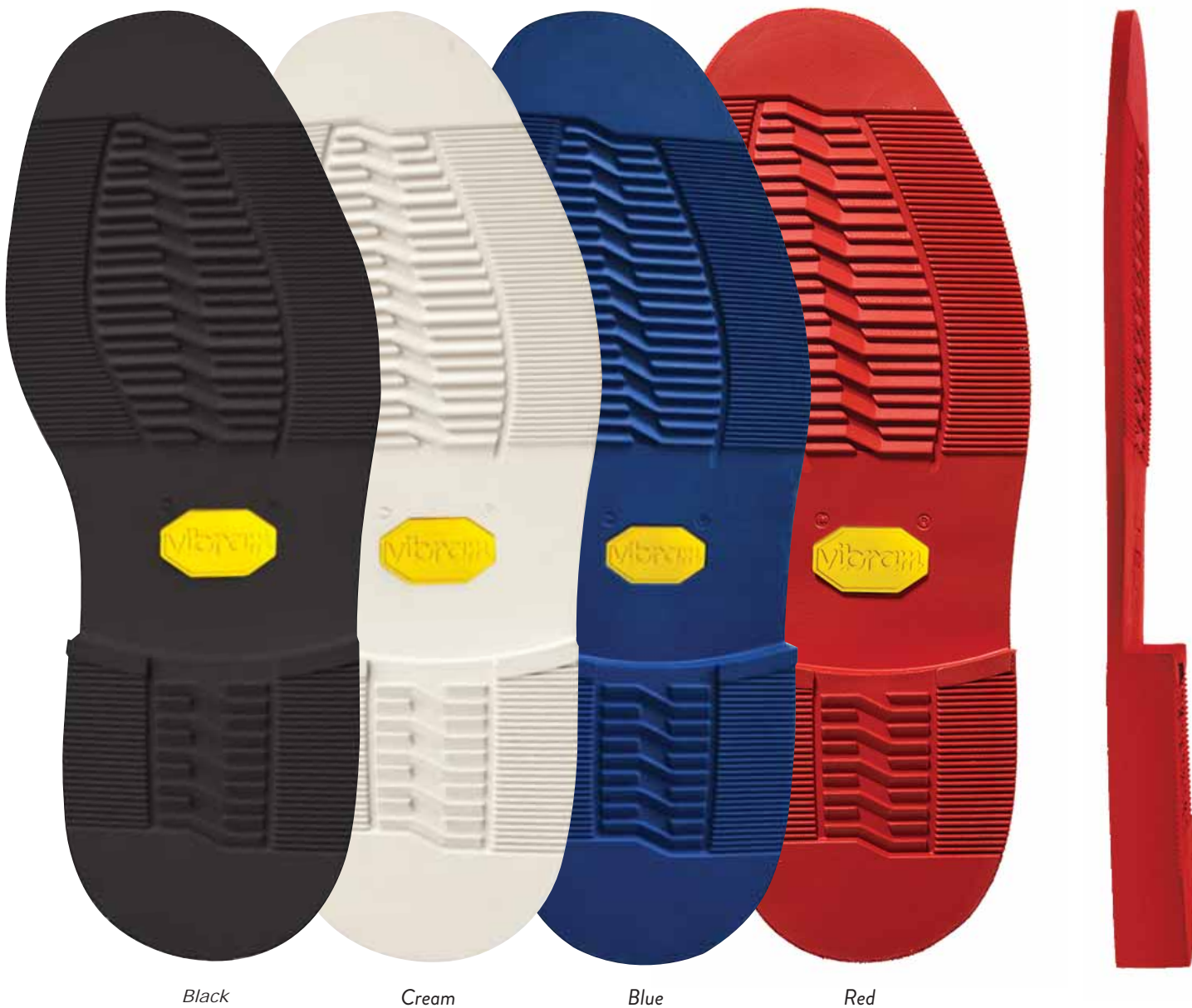
Casual



2094 LIENZ



Comfortable compound that grips and performs well.



COMPOUND

XS City

SIZES

5/6
7/8
9/10
11/12

THICKNESS

11 iron
forepart
37 iron
heel
5.8 mm
forepart
19.6 mm
heel



Casual

2900 ACQUA



Recycled materials are used in this sole. Excellent for casual footwear.



COMPOUND

Eco Step

SIZES

358
392
436

THICKNESS

10 iron
5.3 mm



Casual

Blue Eco
Marine

Brown Eco
Step





ARCTIC GRIP

WET ICE TECHNOLOGY

**The most advanced cold weather gripping system
ever created by Vibram.**



After Ski



Casual



Travel

VIBRAM ARCTIC GRIP

VIBRAM ARCTIC GRIP

Innovative Technology specifically engineered and designed to perform on wet ice. Unique polymer blend coupled with an advanced filler system and new processing technique. Paired with Vibram Icetrek, which yields Vibram's best grip on dry ice. Vibram Arctic Grip offers Vibram performance, quality and durability

- Specifically engineered to perform on wet ice
- Improved grip on cold, iced or snowy surfaces compared with existing Vibram soles

Uses include:

- Lifestyle
- After Ski

Style:

- Outdoor
- Casual

NOTE

Trimming too close to the arctic grip will leave the material vulnerable to tearing. We recommend trimming no closer than 1/8" to the arctic grip. This will greatly enhance the performance.

WARNING

This product will not prevent slipping on any surface. ALWAYS TREAD WITH CARE.
This product does not replace use of spikes.
This product is not intended for use on, and may harm, indoor surfaces.





S1219 BRUSH TAP HALF SOLE



Innovative Technology specifically engineered and designed to perform on wet ice.



Black



COMPOUND

Arctic Grip
& Ice Trek

SIZES

9.5
11.5
13

THICKNESS

8 iron
4.5 mm



Outdoor Sport



Casual

USE WITH HEEL

S1219 BRUSH TOPLIFT



Black

COMPOUND

Arctic Grip
& Ice Trek

SIZES

9.5
11.5
13

THICKNESS

8 iron
4.5 mm



Outdoor Sport



Casual

S1244 YELLOW

Innovative Technology specifically engineered and designed to perform on wet ice.



Black

COMPOUND
Arctic Grip
& Ice Trek

SIZES
40
42
44
46
48

THICKNESS
19.5 iron
forepart
46.5 iron
heel
10.5 mm
forepart
25 mm
heel


Outdoor Sport Casual

S1319 CHRISTY FLAT

Innovative Technology specifically engineered and designed to perform on wet ice.





Black

COMPOUND
Arctic Grip
& Ice Trek

SIZES
8
10
12
13

THICKNESS
9.3 iron
5 mm


Outdoor Sport Casual



MIDSOLES

MIDSOLES

Vibram midsoles offer solid construction and are often used to disperse weight or provide stability to the foot. They provide outstanding compression and are very durable.

- Easily trimmable
- High abrasion
- Colors add life to shoes and make them stand out.

Uses include:

- Casual
- Dress
- Work





7500 MIDSOLE



Add some flair to your shoes with the new bright colors.



COMPOUND

SBR

SIZES

14

THICKNESS

6 iron
3.2 mm



Industrial



Mountaineering



Outdoor Sport



Military



Firefighting

BLOWN SOLES



BLOWN SOLES



BLOWN SOLES

Among the most versatile soles in the industry, Vibram blown soles provide the soft characteristics and weight reduction benefits the consumer desires. Used for applications ranging from lifestyle to work footwear, Vibram blown soles are lightweight, durable and trimmable making them ideal for footwear customization. Vibram blown soles have gone through rigorous testing to ensure the light nature and soft feel does not compromise performance and durability.

- Trimmable
- Light in weight
- Soft feel under foot

Uses include:

- Lifestyle
- Light Industrial

Style:

- Rugged
- Casual

377K CHRISTY THICK



Comfort sole that is suitable for work, casual and service footwear.



Black

Rosso

Gachala

White

Brown Camo

COMPOUND

Newflex

SIZES

6
8
10
12
14

THICKNESS

24 iron
forepart
45 iron
heel
12.7 mm
forepart
23.8 mm
heel



Casual



Orthopedics



516K/516NB LONG HAUL



The density and physical make up of this lightweight sole provide outstanding wear characteristics.

The 516NB does not have the TOPLIFT attached to the sole.



COMPOUND

Newflex

SIZES

8
10
12
14
(Black)

10
12
14
(Tan)

THICKNESS

18 iron
forepart

55 iron
heel

9.6 mm
forepart

29.6 mm
heel



Casual

Tan Black

528K ROCCIA NEWFLEX



Large lugs provide comfort and durability.



Vespro

White

Grigio

Gachala

Black



COMPOUND

Newflex

SIZES

5/6
7/8
12
14

THICKNESS

19.2 iron
forepart

48 iron
heel

10.2 mm
forepart

25.6 mm
heel



Casual

Orthopedics



810K BOLOGNA

Comfort sole that is excellent for dress and casual footwear.



Black

Gachala

Bronze Brown

White

Lime Green

Nautical Blue

COMPOUND

Newflex

SIZES

412
434
470

THICKNESS

15 iron
forepart
48 iron
heel
8.0 mm
forepart
25.4 mm
heel



Casual

1012 SILVATO



Oil-resisting outsole for applications in work and the service industry.



Black

COMPOUND

Blown
Rubber

SIZES

8
10
12
14

THICKNESS

21 iron
forepart
50 iron
heel
11.2 mm
forepart
27 mm
heel



S1559 RIPPLE



Comfort sole suitable for casual and sandal applications.



Vespro Gachala Black

COMPOUND

Newflex

SIZES

380
400
420
440
460

THICKNESS

31 iron
16.4 mm





1705 STOWE



Classic mini lug designed for men's casual and outdoor footwear.



Brown Black

COMPOUND

Gumlite

SIZES

8
10
12
14
(Black)

10
12
14
(Brown)

THICKNESS

16 iron
forepart
37 iron
heel
8.5 mm
forepart
19.6 mm
heel



Casual

1716 OXFORD



Lightweight dress sole.



Brown Red Black

COMPOUND

Gumlite

SIZES

8
10
12
14

THICKNESS

12 iron
forepart
36 iron
heel
6.4 mm
forepart
19 mm
heel



Casual

1743W BOLOGNA



Lightweight sole for dress and casual applications.



Brown Black

COMPOUND

Gumlite

SIZES

8
10
12
13
15
(Black)

10
12
(Brown)

THICKNESS

15 iron
forepart
49 iron
heel
8 mm
forepart
25.9 mm
heel



Casual

1752 STOCKBRIDGE



Ideal replacement sole for dress and casual footwear.



Brown Black

COMPOUND

Gumlite

SIZES

8
10
12
14
(Black)

10
12
(Brown)

THICKNESS

19 iron
forepart
45 iron
heel
10.1 mm
forepart
23.8 mm
heel



Casual



1757 MIDDLEBURY



Designed with large lugs for comfort and durability.
Great for casual footwear.



Brown Black

COMPOUND

Gumlite

SIZES

8
10
12
14

THICKNESS

22 iron
forepart

52 iron
heel

11.6 mm
forepart

28 mm
heel



Casual

1758 STALKER



Designed for stability, comfort, and durability. Ideal for use
on work, outdoor, and hunting footwear.



Black

COMPOUND

Gumlite

SIZES

9
11
13

THICKNESS

21 iron
forepart

44 iron
heel

11.2 mm
forepart

23.3 mm
heel



Casual



Outdoor Sport

2021 CASUAL



Lightweight lifestyle sole.



COMPOUND

Morflex

SIZES

8

10

12

14

(Black)

10

12

(Sand & Brown)

THICKNESS

33 iron
forepart

54 iron
heel

17.5 mm
forepart

28.6 mm
heel



Casual

Brown Sand Black

2060 SPORT



Classic casual walking sole.



COMPOUND

Morflex

SIZES

8

10

12

14

(Black)

10

12

14

(Brown &
Sahara)

THICKNESS

24 iron
forepart

48 iron
heel

12.7 mm
forepart

25.4 mm
heel



Casual

Brown Sahara Black



2062 OLYMPIC



Ideal for rugged look comfort casual footwear.



Brown Black

COMPOUND

Morflex

SIZES

8
10
12
14
(Black)

10
12
14
(Brown)

THICKNESS

22 iron
forepart
43 iron
heel
11.6 mm
forepart
22.7 mm
heel



Casual

950B CHRISTY CAMP MOC



Comfort sole suitable for casual and sandal applications.



White Black

COMPOUND

Newflex

SIZES

6
8
10
12
14

THICKNESS

17 iron
forepart
27 iron
heel
9.0 mm
forepart
14.3 mm
heel



Casual



Orthopedics

2070 SCOOTER



Casual sport sole requiring wedge.



Brown Black

COMPOUND

Morflex

SIZES

8
10
12
13
(Black)

10
12
(Brown)

THICKNESS

12 iron
6.4 mm



Casual

984K SCOOTER



Casual sport sole requiring wedge.



Autumn
Glory Bright
Gold

COMPOUND

Morflex

SIZES

7/8
9
11
14

THICKNESS

12 iron
6.4 mm



Casual



2345 LINE-LITE



Lightweight sole for dress and casual applications.



Brown Black

COMPOUND

Morflex

SIZES

8
10
12
14
(Black)

10
12
(Brown)

THICKNESS

14 iron
forepart
40 iron
heel
7.4 mm
forepart
21 mm heel



Casual

2602 DESERT BOOT



Lightweight compound that works very well on casual footwear.



Flint Beige Cream

COMPOUND

Gumlite

SIZES

390
412
434
456

THICKNESS

17 iron
forepart
48 iron
heel
9 mm
forepart
25.4 mm
heel



Casual

4007 BASKETWEAVE



Outsole designed for work and service footwear.



Black

COMPOUND

Blown
Rubber

SIZES

10
12
14

THICKNESS

21 iron
forepart
51 iron
heel
11.2 mm
forepart
27 mm
heel



Casual

Industrial

4014 CRISTY



Suitable for work, lifestyle, and service footwear.



Natural Black

COMPOUND

Blown
Rubber

SIZES

8
10
12
14
(Black)

8
10
12
14
16
(Natural)

THICKNESS

21 iron
forepart
55 iron
heel
11.2 mm
forepart
29.1 mm
heel



Casual

Industrial



HALF SOLES

HALF SOLES

Built with the same characteristics as our solid soles, half-sole designs allow for easy repair using high quality product. Built to allow maximum customization these soles are the top choice for partial sole replacement.

- Trimmable
- Superior traction
- Versatile designs
- High abrasion resistance

Uses include:

- Dress
- Casual
- Work/industrial footwear re-crafting

Style:

- Rugged
- Casual





705 TYGUM



Oil resisting half sole. Use with 700 heel.



Black

COMPOUND

Nitrile

SIZES

12
14

THICKNESS

14 iron
7.4 mm



Casual Travel

700 TYGUM HEEL



Oil resisting heel. Use with 705 half sole.



Black

COMPOUND

Nitrile

SIZES

12
14

THICKNESS

35 iron
19 mm



Casual Travel

2332 LUG



A men's half sole in a soft 5 mm rubber, classic Vibram design with Carrarmato lugs.



Black

COMPOUND

SBR

SIZES

43/44
47/48

THICKNESS

10 iron
5.3 mm



Casual Travel

5722/5723 LUG HEEL



A 6.4 and 12.7 mm unisex heel of a soft compound designed for comfort and durability especially at low temperatures, with excellent resistance to wear.



Black

COMPOUND

SBR

SIZES

24, 28,
34, 40
(5723 size 40
only)

THICKNESS

12 iron
6.4 mm
(5722)

24 iron
12.7 mm
(5723)



Casual Travel

2336 TAPERED



A women's half sole of solid 1.8 mm rubber, tapered template with rounded profile. Ideal for resoling and protection of stylish boots and shoes.



Neutral

COMPOUND

SO

SIZES

2
3

THICKNESS

3 iron
(tapered edges)

1.8 mm
(tapered edges)



2340 EXPLOSION



A unisex half sole of 2.2 mm buffed solid rubber; the biomechanical design favors the natural movement of the foot. Application with 5340 heel is recommended.



Black

COMPOUND

SO

SIZES

3

THICKNESS

4 iron
2.2 mm



5350/5351 TOP TACCO



A 6 and 8 mm die-cut buffed toplift, classic template, excellent resistance to wear. Ideal for repairs to elegant shoes.



Neutral

COMPOUND

TOP85

SIZES

13/14
15/16
17/18

THICKNESS

11.5 iron
6 mm
(5350)

15 iron
8 mm
(5351)



5340 EXPLOSION TOPLIFT



A 7 mm cut and buffed heel has a classic template, excellent resistance to wear, biomechanical design. Use coupled with article 2340 Explosion half sole is recommended.



Black

COMPOUND

TOP85

SIZES

4

THICKNESS

13 iron
7 mm





2341 RAPTOR



A half sole with a 4.5 mm claw tread design. Thanks to its special compound and new lugs designed to guarantee high level of grip, it is the best solution for resoling and re-construction of footwear which needs to take on ice and snow.



Black

COMPOUND

SP

SIZES

3

THICKNESS

8.4 iron
4.5 mm



Casual

Travel

2724 OIL-RESISTING



Oil resisting half sole. Use with 430 heel.



Black

COMPOUND

Nitrile

SIZES

12
14

THICKNESS

14 iron
7.4 mm



Casual

Industrial

5341 RAPTOR TOPLIFT



A heel of soft 7 mm rubber with a claw tread design. Thanks to its special compound, new lug design, and perfect all-round durability, it is the best solution for resoling and re-construction of footwear which needs to take on ice and snow.



Black

COMPOUND

SP

SIZES

3

THICKNESS

13 iron
7 mm



Casual

Travel

430 OIL-RESISTING HEEL



Oil resisting heel. Use with 2724 half sole.



Black

COMPOUND

Nitrile

SIZES

10, 12
14

THICKNESS

35 iron
19 mm



Casual

Industrial

2324 MIRROR



A unisex half sole of solid 3 mm rubber, comfort template with a sheen surface. Ideal for resoling and protection of casual boots and shoes which need a touch of novelty. For use in combination with toplift 5324.



Black

COMPOUND

MS

SIZES

43/47

THICKNESS

6 iron
3 mm



2725 FINE LINE



Men's dress fine line half sole.



Neutral

COMPOUND

SBR

SIZES

12
14

THICKNESS

10.5 iron
5.6 mm



5324 MIRROR



A unisex toplift of 5.5 mm solid rubber, comfort template with the new Vibram mirror design. Ideal for resoling and protection of casual boots and shoes which need a touch of class. For use in combination with half sole 2324.



Black

COMPOUND

TOP85

SIZES

43/47

THICKNESS

10.5 iron
5.5 mm



2726 FINE LINE



Men's dress fine line half sole.



Neutral

COMPOUND

SBR

SIZES

12
14

THICKNESS

12 iron
6.4 mm





2028 RICHARD



A men's half sole in 2.2 mm solid rubber, comfort template, narrow line pattern.



Neutral Black

COMPOUND

SO

SIZES

3
4

THICKNESS

4 iron
2.2 mm



Casual



Travel

3349 MARZIA



A 2.1 mm women's half sole of solid rubber with the classic template narrow line pattern. Recommended for cold weather conditions.



Neutral

COMPOUND

SBR

SIZES

40/42

THICKNESS

4 iron
2.1 mm



Casual



Travel





HEELS

Vibram heels offer solid construction with superior wear resistance, making them the most durable replacement heels on the market.

- Trimmable
- Non slip characteristics
- Versatile designs
- High abrasion resistance

Uses include:

- Dress
- Casual
- Work/industrial footwear re-crafting

Style:

- Rugged
- Casual

100 MONTAGNA (WASHER)



Lug heel for use with 100 full sole.



Honey Black

COMPOUND

SBR and
Fire & Ice

SIZES

9
10
11
12
13
14
15
16
18
(Black)

12
13
14
15
(Honey)

THICKNESS

42 iron
22.2 mm



430 OIL-RESISTING (WASHER)



Oil resisting washer heel. Use with 430 full sole.



Black

COMPOUND

Nitrile

SIZES

10
12
14

THICKNESS

36 iron
19 mm





438 COWBOY (WASHER)



Cowboy heel featuring a classic western design.



Neutral

COMPOUND

SBR

SIZES

3/5
7
9
11
13
15

THICKNESS

21 iron
11.2 mm



Casual



Industrial

468 COMFORT CUSHION (CORE)



Core comfort cushion heel.



Neutral

COMPOUND

SBR

SIZES

9/10
10/11
11/11
11/12
12/13
13/14
14/15
15/16
16/17

24 iron
12.7 mm

9/10
10/11
11/12
12/13
13/14
14/15
15/16
16/17

29 iron
15.9 mm

9/10
10/11
11/12
12/13
13/14
14/15
15/16
16/17

36 iron
19 mm



Casual

700 V-BAR (WASHER)



Oil resisting heel. Use with 700 full sole.



Black

COMPOUND

Nitrile

SIZES

12
14

THICKNESS

36 iron
19 mm



Casual

Industrial

700C V-BAR ELONGATED (WASHER)



Elongated oil resisting cowboy heel. Use with 700 full sole.



Amber

Black

COMPOUND

Nitrile

SIZES

12
13

THICKNESS

36 iron
19 mm



Casual

Industrial

7335 BROWN CORK (CORE)



Use with 700 cork full sole.



Brown
Cork

COMPOUND

Cork

SIZES

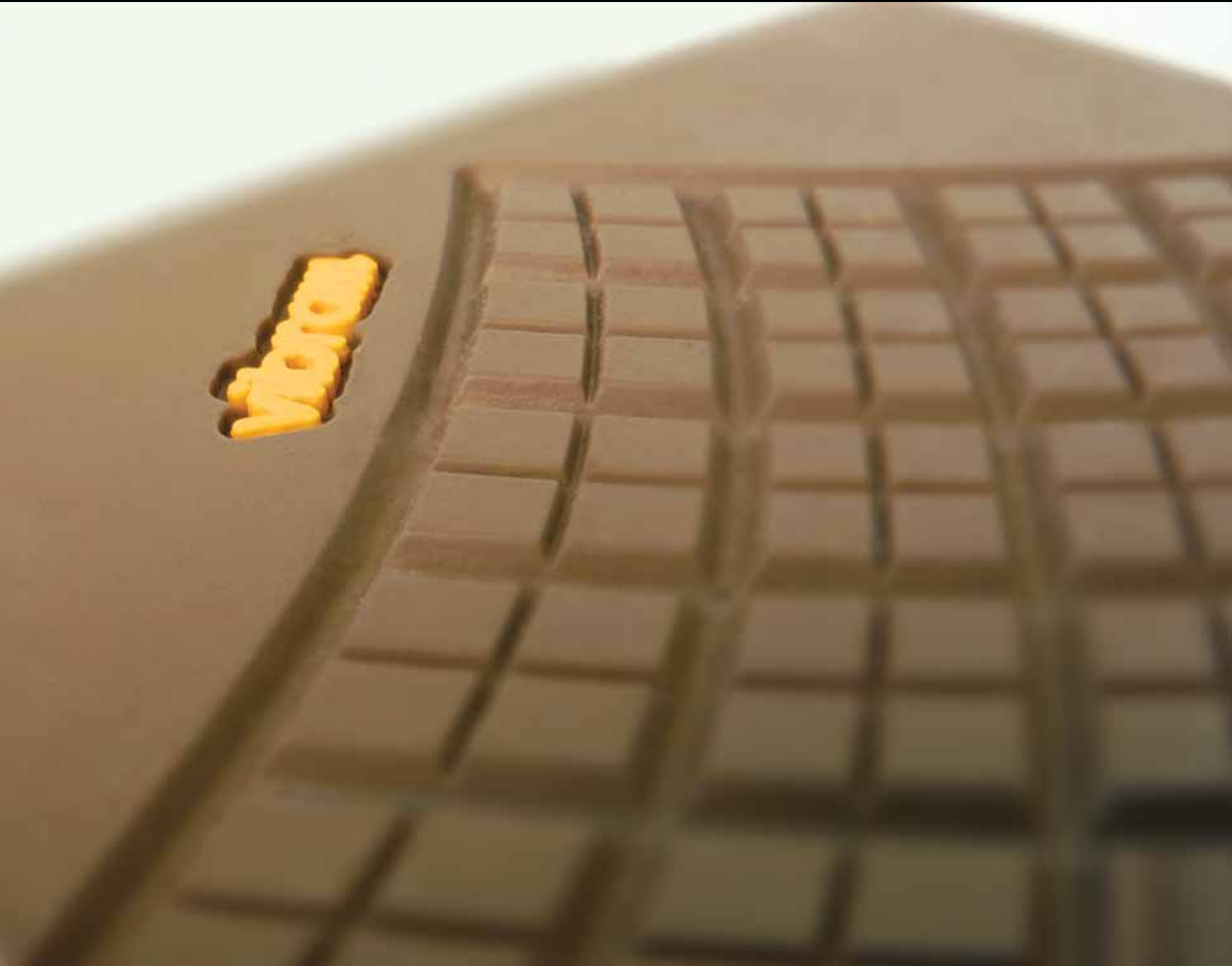
33
35
37

THICKNESS

36 iron
19 mm



Casual



TOPLIFTS

TOPLIFTS

Thin and durable, a Vibram toplift is the perfect choice for a stacked heel repairs. Built with the same quality and performance attributes as our full size heels, toplifts are easy to work with and provide great versatility.

- Trimmable
- Thin and lightweight
- High abrasion resistance
- Slip resistant characteristic

Uses include:

- Dress
- Casual
- Work/industrial footwear re-crafting

Style:

- Rugged
- Casual

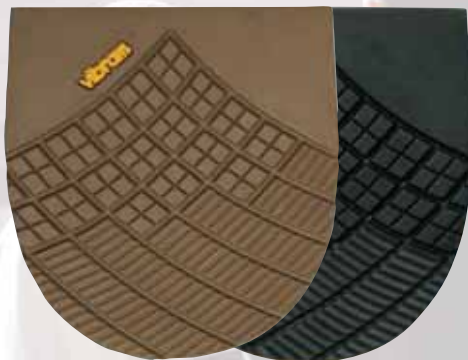




516KH LONG HAUL



A toplift of 6 mm soft rubber which ensures excellent grip and resistance to wear. Use recommended in combination with sole 516KS.



Tan Black

COMPOUND

TC1

SIZES

14

THICKNESS

12 iron
6.4 mm



Casual Orthopaedics

5340 EXPLOSION



A 7 mm cut and buffed heel has a classic template, excellent resistance to wear, biomechanical design. Use coupled with article 2340 Explosion half sole is recommended.



Black

COMPOUND

TOP85

SIZES

4

THICKNESS

13 iron
7 mm



Casual Travel

5324 MIRROR



A unisex toplift of 5.5 mm solid rubber, comfort template with the new Vibram mirror design. Ideal for resoling and protection of casual boots and shoes which need a touch of class. For use in combination with half sole 2324.



Black

COMPOUND

TOP85

SIZES

43/47

THICKNESS

10.5 iron
5.5 mm



Casual

5341 RAPTOR



A heel of soft 7 mm rubber with a claw design. Thanks to its special compound, new lug design, and perfect all-round durability, it is the best solution for resoling and re-construction of footwear which needs to take on ice and snow.



Black

COMPOUND

SP

SIZES

3

THICKNESS

13 iron
7 mm



Casual Travel

5350 TOP TACCO



A 6 mm die-cut buffed toplift, classic template, excellent resistance to wear. Ideal for repairs to elegant shoes.



Neutral

COMPOUND

TOP85

SIZES

13/14
15/16
17/18

THICKNESS

11.5 iron
6 mm



Casual Travel

5351 TOP TACCO



An 8 mm die-cut buffed toplift, classic template, excellent resistance to wear. Ideal for repairs to elegant shoes.



Neutral

COMPOUND

TOP85

SIZES

13/14
15/16
17/18

THICKNESS

15 iron
8 mm



Casual Travel

5362 BOSTON



A 6 mm heel with a classic template in a soft compound designed for comfort and durability, especially at low temperatures. Excellent resistance to wear.



Neutral

COMPOUND

SO

SIZES

13/14
15/16
17/18

THICKNESS

11.5 iron
6 mm



Casual Travel

5363 BOSTON



An 8 mm heel with a classic template in a soft compound designed for comfort and durability, especially at low temperatures. Excellent resistance to wear.



Neutral

COMPOUND

SO

SIZES

13/14
15/16
17/18

THICKNESS

15 iron
8 mm



Casual Travel



5722 LUG



A 6.4 mm unisex heel of a soft compound designed for comfort and durability especially at low temperatures, with excellent resistance to wear.

COMPOUND

SBR

SIZES

24, 28,
34, 40

THICKNESS

12 iron
6.4 mm



Black



Casual

Travel

5723 LUG



A 12.7 mm unisex heel of a soft compound designed for comfort and durability especially at low temperatures, with excellent resistance to wear.

COMPOUND

SBR

SIZES

40

THICKNESS

24 iron
12.7 mm



Black



Casual

Travel





PROTECTIVE SOLING

With the cost of today's footwear in mind, preventative treatments extend the life of the customers investment. Our protective components are thin and non intrusive to the look of a shoe, while providing slip resistance and durability.

- Flexible
- Trimmable
- Low profile

Best use:

- Lifestyle shoe protection

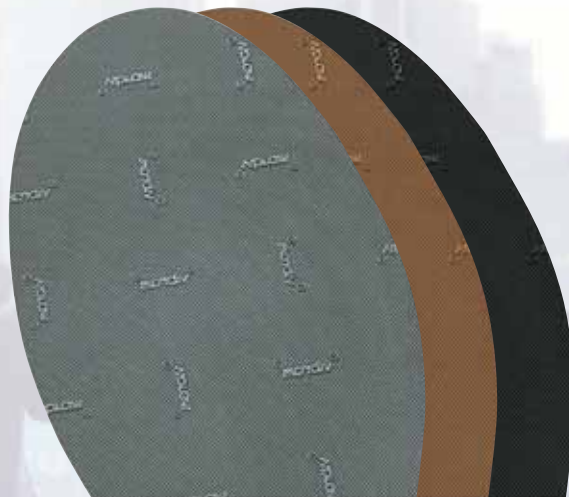
Style:

- Rugged
- Casual

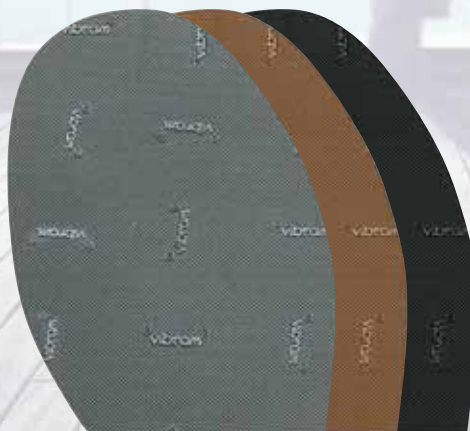
2673 PROTANIA



Long-wearing and durable protective soling.



Neutral Dark Oak Black



Neutral Dark Oak Black

COMPOUND

SBR

SIZES

MEN'S
47/50

WOMEN'S
40/42

THICKNESS

3.5 iron
1.8 mm



Casual

7673 PROTANIA



A solid rubber sheet with a continuous diamond design. Ideal for the die-cutting of half soles. Used in the repair and production of elegant shoes, including those with leather soles. This product features excellent modular grip on cutting and die-cutting.



Black



Dark Oak



Neutral

COMPOUND

SBR

SIZES

18" x 36"
45.7 x 91.4 cm

36" x 36"
91.4 x 91.4 cm

THICKNESS

3.5 iron
1.8 mm



Casual



7373 PROTANIA



With the cost of today's footwear in mind, preventative treatments extend the life of the customer's investment. Our Protania Protective Sheets increase the grip and abrasion resistance of the sole by using thin and flexible Vibram rubber. They are available in 22 colors.



Black (09)*



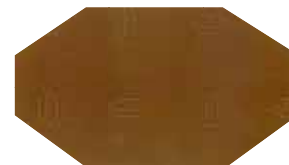
Green (39)



Ruby (78)



Blue (43)



Cappuccino (75)



White (2)



Dark Brown (18)



Silver (46)



Caramel (93)



Brown (12)



Leather (21)*



Gold (47)



Military Green (95)



Oak (14)*



Light Blue (34)



Flint (49)*



Bright Pink (99)



Orange/Red (17)



Grape (35)



Orange (54)



Gray (57)



Yellow (40)

COMPOUND

TOP85

SIZES

18.5" x 23.5"
47 x 59.7 cm

37" x 23.5"
94 x 59.7 cm

THICKNESS

2 iron
3.5 iron

1 mm
1.8 mm*



Fashion

*Available in
1 mm and 1.8 mm.





ROCKCLIMBING

The mountains are part of our DNA, and we are always climbing.

Suggested for small edges

7530 XS EDGE

Suggested for maximum grip pro competition

7520 XS GRIP2

Suggested for having good grip

7507 XS GRIP

Suggested for indoor non-marking

7509 XS FLASH

Suggested for points and bands

7510 GRIP

7130 NEW BOULDER



Extra soft rubber compound with a new suction design. Ideal for die cutting soles and inserts, and for the repair and production of approach soles. Perfect material to use when traction and grip is required on uneven wet surfaces.



Black

COMPOUND

Idrogrip

SIZES

36.6" x 25.2"
93 x 64 cm

THICKNESS

8.4 iron
4.5 mm



Climbing

7507 XS GRIP



A new softer rubber compound engineered for free climbing shoes that provides a higher level of grip in both the heat and the cold.



Black

COMPOUND

XS Grip

SIZES

36.6" x 25.2"
93 x 64 cm

THICKNESS

6.5 iron
3.5 mm

7.44 iron
4 mm



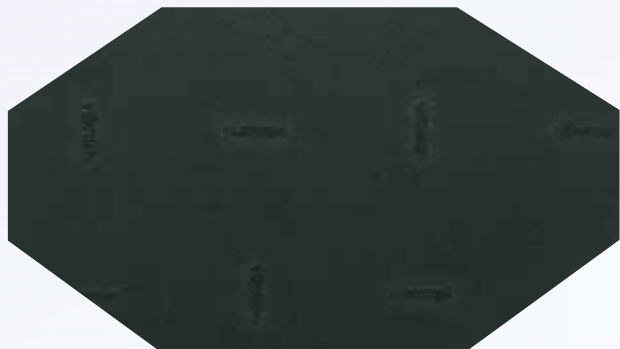
Climbing



7509 GRIP MARCHIATA



This sheet branded with the Vibram script, makes it ideal for the resoling of free climbing shoes. Recommended for special applications where extreme grip is required, such as inserts for gloves, prosthetics and supports. For outdoor use.



Black

COMPOUND

GRIP

SIZES

36.6" x 25.2"
93 x 64 cm

THICKNESS

6.5 iron
3.5 mm

9.3 iron
5 mm



Climbing

7509 XS FLASH



INDOOR CLIMBING SHEET

New non-marking compound which provides maximum grip on artificial footholds and leaves indoor walls clean.



Gray

COMPOUND

XS Flash

SIZES

36.6" x 25.2"
93 x 64 cm

THICKNESS

9.3 iron
5 mm



Climbing

7510 GRIP



Sheet branded with the Vibram script. It is ideal for resoling free climbing shoes. Recommended for special applications where extreme grip is required, such as inserts for gloves, prosthetics and supports.



Black

COMPOUND

GRIP

SIZES

36.6" x 25.2"
93 x 64 cm

THICKNESS

3.3 iron
1.8 mm

6.5 iron
3.5 mm

9.3 iron
5 mm



Climbing





7520 XS GRIP 2



XS Grip 2 is in the next generation of the XS Grip compound. It provides a very high level of grip in both heat and cold.



Black

COMPOUND

XS Grip 2

SIZES

36.6" x 25.2"
93 x 64 cm

THICKNESS

7.4 iron
4 mm

9.3 iron
5 mm



Climbing

7530 XS EDGE



A Vibram climbing compound that allows weight to be concentrated on even the smallest holds. Thanks to its improved resistance to plastic deformation, Vibram XS Edge keeps its shape even after repeated use in all climate conditions. For outdoor use.



Black

COMPOUND

XS Edge

SIZES

36.6" x 25.2"
93 x 64 cm

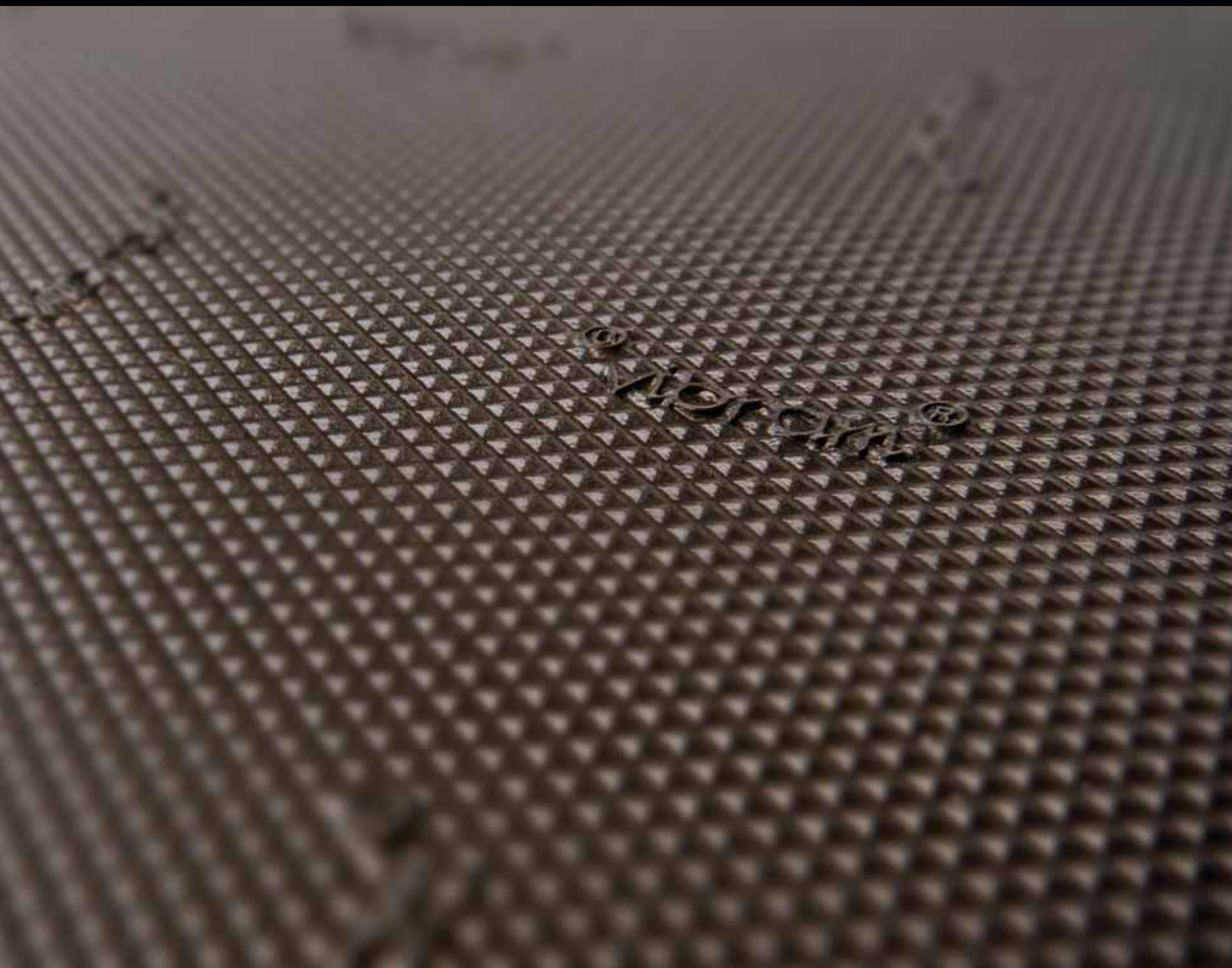
THICKNESS

7.4 iron
4 mm

9.3 iron
5 mm



Climbing





SHEETS

Customers have a wide variety of footwear re-crafting needs. Whether a full sole, half sole, heel, or toplift replacement, Vibram soling and toplift sheets are available in numerous compounds and designs, providing you with limitless options for the perfect re-crafting solution. Fully trimmable and easily applied, Vibram sheets allow you to get the job done no matter how challenging the re-crafting may be.

Uses include:

- Outsole
- Toplifting
- Build-up
- Midsole

Style:

- Rugged
- Casual

650 SILVANO



Long wearing. Provides excellent traction.



Black

COMPOUND

SBR

SIZES

20" x 25"
50.8 x 63.5 cm

THICKNESS

10 iron
5.3 mm



Casual

7106 GUM CREPE SHEET



The gum crepe sheet is ideal for gripping and has wonderful wear characteristics. The sheet is flexible and provides comfort when walking.



Black

COMPOUND

SP

SIZES

24.4" x 35.8"
60 x 90 cm

THICKNESS

3.7 iron
2 mm

7.4 iron
4 mm

11 iron
6 mm



Brown



Transparent



Cream



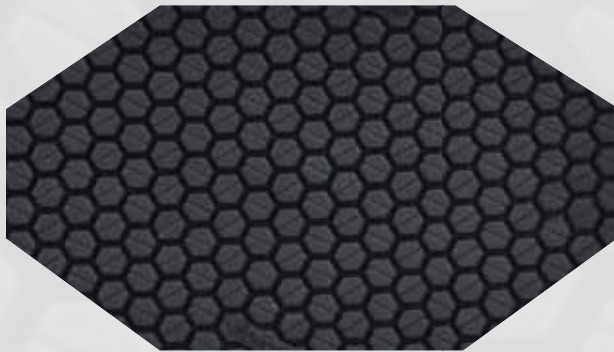
Casual



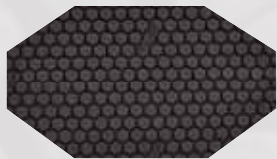
7120 XS CITY SHEET



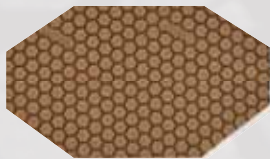
Sheet has excellent grip and cushion on wet surfaces and tiled surfaces. Sheet is oil resisting.



Black



Brown



Hazelnut



White

COMPOUND

XS City

SIZES

17.7" x 23.6"
45 x 59.9 cm

THICKNESS

7.5 iron
4 mm



Casual

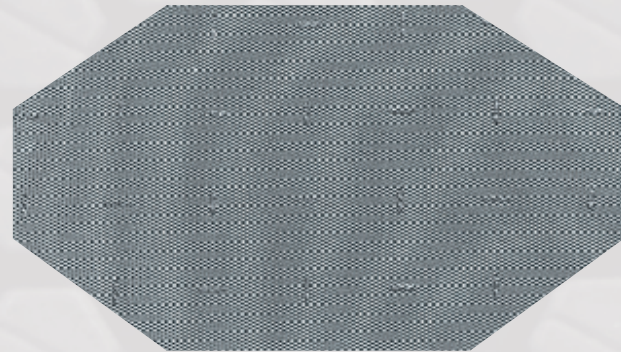


Travel

7166Q TOPLIFT



Toplifting sheet made in two compounds; softer for men and firmer for women's footwear.



Neutral



Oak

COMPOUND

SBR

SIZES

WOMEN'S
9.5" x 30"
24.1 x 76.2 cm

MEN'S
14.4" x 30"
36.6 x 76.2 cm

THICKNESS

WOMEN'S
10.5 iron
5.6 mm
(Neutral & Oak)

MEN'S
12 iron
6.4 mm
(Neutral)

15 iron
8 mm
(Neutral)

18 iron
9.6 mm
(Neutral)



Casual

7170 LISK



Lisk is a soft rubber sheet with Vibram's continuous zigzag pattern. This sheet is ideal for die-cutting soles. It's a great choice for resoling shoes when non-slip properties and high level of comfort are required. This sheet will give any sole a stylish yet casual appearance.



Black

COMPOUND

SP

SIZES

22.8" x 18"
57.9 x 45.7 cm22.8" x 35.8"
57.9 x 90.9 cm

THICKNESS

7.5 iron
4 mm

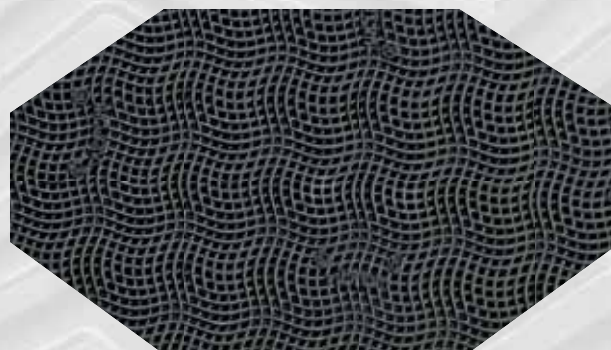
Casual

Travel

7175 CHERRY



A soft rubber sheet, continuous Vibram net design. Ideal for the die-cutting of soles, heels, and inserts, to be used for the repair of shoes when excellent grip is required. The product features excellent modular grip for cutting and die-cutting. Product maintains its perfect shape during the die cutting process, making it ideal for smooth edge finishing.



Black



Cream

COMPOUND

SP

SIZES

11.4" x 35.8"
29 x 90.9 cm22.8" x 35.8"
57.9 x 90.9 cm

THICKNESS

7.5 iron
4 mm
(Black & Cream)11 iron
6 mm
(Black)

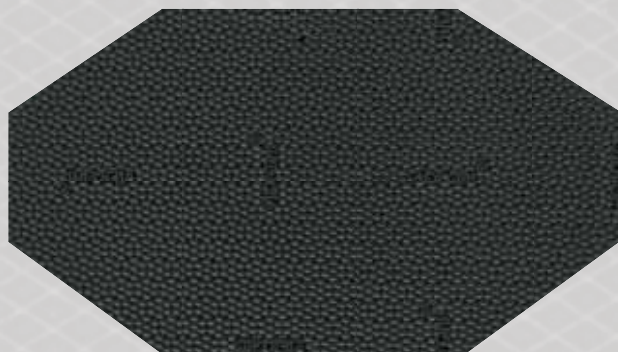
Casual



7279 DUPLA



Long wearing sheet with pebble finish. Two-ply feature provides flexibility and comfort.



Black



Caramel



Neutral



Oak

COMPOUND

SBR

SIZES

21" x 17"
53.3 x 43.1 cm

THICKNESS

11 iron
6 mm



Casual

7663 TEQUILGEMMA



A sheet of medium hardness. The sheet is solid rubber with a continuous diamond design. Ideal for die-cutting of half soles, soles and toplifts. It can be used for both repair and protection of elegant shoes, including those with leather soles.



Black

COMPOUND

SO

SIZES

22" x 33.5"
55.9 x 85.1 cm

THICKNESS

3.72 iron
2 mm

5.6 iron
3 mm

7.4 iron
4 mm

9.3 iron
5 mm

11 iron
6 mm



Casual

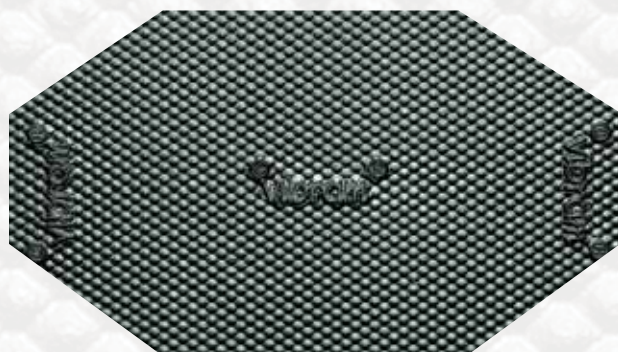


Fashion

8102 MORFLEX® PYRAMID



Durable, oil resisting, lightweight Morflex® sheets for outsole replacement.



Black



Coffee



Brown



Taupe



White

COMPOUND

SBR
(bounding layer)

TPU
(design layer)

SIZES

18" x 36"
45.7 x 91.4 cm

THICKNESS

12 iron
6.4 mm
(Black, Coffee,
Brown, Taupe,
White)

15 iron
8 mm
(Black, Coffee,
Brown)

18 iron
9.6 mm
(Black, Coffee,
Brown, White)

21 iron
11.2 mm
(Black)

24 iron
12.7 mm
(Black, Coffee,
Brown, Taupe,
White)

30 iron
15.9 mm
(Black)



Casual

8102 MORFLEX® SUEDE



Durable, oil resisting, lightweight Morflex® sheets for orthopedic build up.



Black



Brown



Taupe

COMPOUND

Morflex

SIZES

18" x 36"
45.7 x 91.4 cm

THICKNESS

12 iron
6.4 mm

24 iron
12.7 mm



Casual



Orthopedics



8327 WOODSTOCK SHEET



The Woodstock is lightweight and durable. It is an excellent replacement soling material for sandals and casual footwear.



Black



Brown

COMPOUND

Morflex

SIZES

23.5" x 34"
60 x 86.4 cm

THICKNESS

18.6 iron
10 mm



Casual



Orthopedics

8529 SPORT UTILITY



Multi-directional, oil-resisting Gumlite sheet. Excellent replacement for casual, golf, and orthopedic shoes.



Black

COMPOUND

Gumlite

SIZES

23" x 28"
58.4 x 71.1 cm

THICKNESS

12 iron
6.4 mm

15 iron
8 mm



Casual



Travel



Orthopedics

8868 SUPER NEWFLEX



An innovative blown sheet made with Vibram Super Newflex compound. This compound was developed to enhance the features of the Vibram Newflex compound. The material is 40% lighter and more flexible while still retaining its high abrasion resistance and providing enhanced grip.



Black



Senape

COMPOUND

Super
Newflex

SIZES

19.7" x 27.5"
50 x 70 cm

THICKNESS

7.5 iron
4 mm
(Black)

11 iron
6 mm
(Black)

15 iron
8 mm
(Black)

11 iron
6 mm
(Senape)



8870 NEWFLEX



Vibram Newflex compound sheet with the classic herringbone design. Its excellent shock absorbent capacity and light weight, combined with exceptional resistance to wear, make this sheet a great selection for resoling and manufacturing. Ideal for both sport and orthopedic applications, Newflex can be easily glued with normal neoprene adhesives.



Black



Brown



Beige



White

COMPOUND

Newflex

SIZES

22" x 27.5"
55.9 x 19.1 cm

THICKNESS

10 iron
5 mm
(Black & White)

15 iron
8 mm
(Black & White)

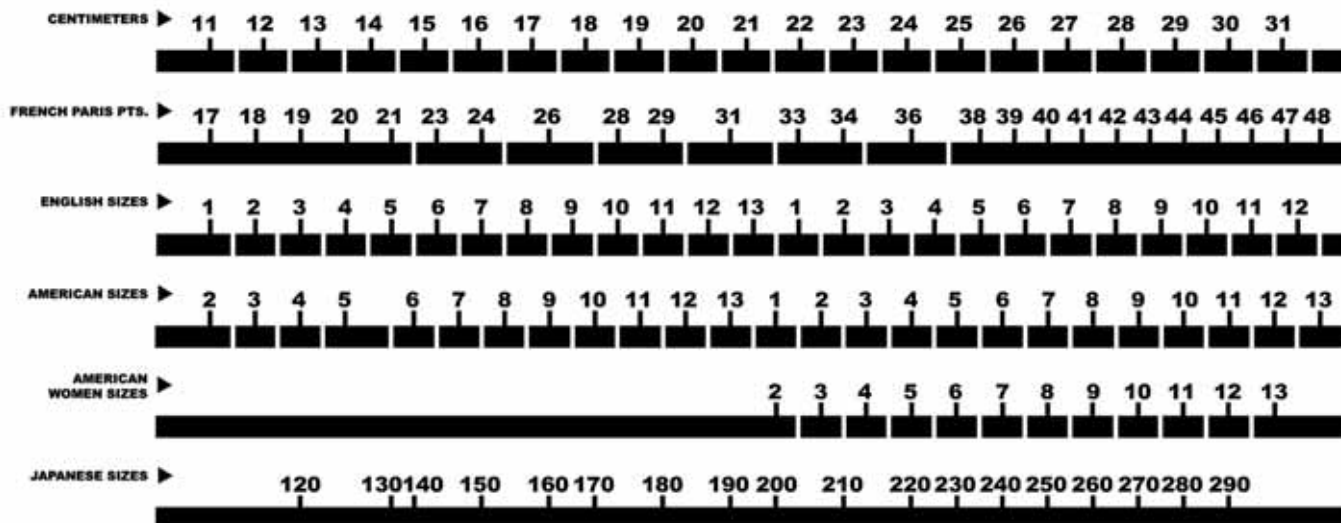
19 iron
10 mm
(Black & White)

10 iron
5 mm
(Brown & Beige)





INTERNATIONAL SIZES



ALL VIBRAM® STYLES AND DRAWINGS ARE PATENTED AND INTERNATIONALLY PROTECTED

VIBRAM'S INNOVATIONS, IMAGES AND CREATIVITY ARE PROTECTED BY LAWS ON INDUSTRIAL BRAND AND COPYRIGHT PROPERTY.

VIBRAM VIGOROUSLY SAFEGUARDS ITS RIGHTS AND WILL ENGAGE IN LEGAL ACTION AGAINST IMITATIONS AND COUNTERFEITS. VIBRAM RECENTLY OBTAINED A FAVORABLE RULING AGAINST PEOPLE AND COMPANIES RESPONSABLE FOR COUNTERFEITS AND/OR IMITATIONS OF ORIGINAL VIBRAM® PRODUCTS, STYLES AND DRAWING.

For further information: brandprotection@vibram.com

CONVERSION CHART

Iron	Fraction	Inches	mm	Iron
1	1/48	0.02083	0.529	1
3	1/16	0.063	1.6	3
4		0.083	2.1	4
4.5		0.094	2.4	4.5
5		0.104	2.7	5
6	1/8	0.125	3.2	6
7		0.146	3.7	7
8		0.167	4.2	8
9	3/16	0.188	4.8	9
10.5		0.219	5.6	10.5
12	1/4	0.250	6.4	12
14		0.292	7.4	14
15	5/16	0.312	8.0	15
16		0.333	8.5	16
17		0.354	9.0	17
18	3/8	0.375	9.6	18
21	7/16	0.437	11.2	21
24	1/2	0.500	12.7	24
27	9/16	0.562	14.3	27
30	5/8	0.625	15.9	30
33	11/16	0.687	17.5	33
36	3/4	0.750	19.0	36
39	13/16	0.813	20.6	39
42	7/8	0.875	22.2	42
45	15/16	0.938	23.8	45
48	1	1.000	25.4	48
54	1 1/8	1.125	28.6	54
60	1 1/4	1.250	31.7	60

VIBRAM REPAIR TAG

Packaging

5,000 tags per carton numbered 001-5000 and numbered 5001 - 10,000

Remarks

Blank space provided on tag for shop name, address and telephone number.
Tag number on top and bottom.
Made in U.S.A.

Tag Size

2 7/8" x 5 5/8"

Material

Yellow Card Stock

Ink

Black ink printed on two sides

Perforation

One easy tear perforation the width of tag

Reinforced Hole

3/16"





USA MEASUREMENTS

Style #	Size 5 Length	Size 6 / 6.5 Length	Size 7 / 7.5 Length	Size 8 Length	Size 9 / 9.5 Length	Size 10 / 10.5 Length	Size 11 / 11.5 Length	Size 12 / 12.5 Length	Size 13 / 13.5 Length	Size 14 Length	Size 15 Length	Size 16 Length
Measured to the nearest 1/8"												
100				11 1/2"	11 7/8"	12 1/2"	13"	13 1/2"	13 7/8"	14 1/4"		
109				12 1/2"		13 1/8"		13 3/4"				
127						12 1/2"		13"		13 5/8"		
132				11 3/8"	12"	12 3/8"	13"	13 1/4"		14 1/4"		
134AR						12 5/8"		13 1/4"		14"		
148				11 1/4"		12 1/4"		13 3/8"		14 3/8"		
148W		11 3/8"			12 3/8"				13 3/4"			
171C		11 1/2"	11 1/2"	12 1/8"	12 1/8"		13 3/8"	13 3/8"	13 3/8" 14 1/8"	14 1/8"	14 1/8"	
232				11 3/8"		12"		12 5/8"		13 1/4"		
268						12 1/2"		13 1/4"		13 3/4"		
269								13 1/4"		13 1/8"		
342C			12 1/4"		12 7/8"	14"		14 5/8"				
377K		11 3/4"		12 1/4"		13"		13 3/4"		14 1/2"		
417K		11 1/4"			12 1/4"				13 5/8"	14 1/2"		
430						12 3/8"		13 1/8"		13 3/4"		
516K				12 1/4"		12 5/8"		13 1/4"		13 7/8"		
528K	12 1/2"	12 1/2"	13 1/8"	13 1/8"				14"		14 1/2"		
625K		11 1/2"		12"		12 3/4"		13 1/2"		14 1/2"		
669KS					12 1/2"				13 7/8"			
700						12 1/2"		13 1/4"		13 3/4"		
Q732									14 1/8"			
885K		11 1/4"			12 1/2"				13 1/2"			
950B		11 3/4"		12 1/2"		13 1/4"		14"		14 1/2"		
984K			12"	12"	12 1/2"		13"			14"		
1012				12"		12 3/4"		13 1/2"		14"		
1136						12 1/2"	12 7/8"		13 1/2"			
S1219						12 5/8"			14"			
S1219 Brush Heel						3 5/8"		3 7/8"				
1249			12 1/4"		13"		13 1/2"		14"			
1275				12 1/8"		13"		13 1/2"		14 1/8"		
1276				12 3/8"		13 3/8"		13 3/4"		14 3/8"		
1286						13 1/8"	13 1/2"	13 3/4"				
1318						12 7/8"		13 1/4"		14"		
S1319						13 3/8"		14"	14 1/4"			
1328				11 1/4"		12 3/8"			13 3/4"			
1330	11 1/4"			12 1/8"		12 3/4"			13 3/4"		14 1/2"	
1330W				11 3/8"		12 3/8"			13 3/4"			
1374				11 3/8"		12 3/8"			13 3/4"			
1443				12 1/2"		13 1/8"		13 7/8"		14 1/2"		
1685				12 1/4"		13"			13 3/4"			
1705				12 1/8"		12 1/2"		13 1/8"		13 7/8"		
1716				12"		12 3/4"		13 1/2"		14"		
1743W				12 1/8"		12 3/4"		13 5/8"	13 5/8"			
1752				12"		12 3/4"		13 1/2"		14"		

SOLE LENGTHS

USA MEASUREMENTS

Style #	Size 5 Length	Size 6 / 6.5 Length	Size 7 / 7.5 Length	Size 8 Length	Size 9 / 9.5 Length	Size 10 / 10.5 Length	Size 11 / 11.5 Length	Size 12 / 12.5 Length	Size 13 / 13.5 Length	Size 14 Length	Size 15 Length	Size 16 Length
Measured to the nearest 1/8"												
1757				12"		12 3/4"		13 1/2"		14"		
1758					12 1/4"		12 7/8"		13 3/4"	14"		
2021				12"		12 3/4"		13 1/2"		14"		
2055S	11"	11"	11 3/4"	11 3/4"	12 1/2"	12 1/2"	13"	13"	14"	14"		
2060				12"		12 3/4"		13 1/2"		14"		
2062				12 1/8"		12 1/2"		13 1/8"		13 7/8"		
2070				12"		12 3/4"		13 1/2"	13 3/4"			
2074		11 1/2"		12 3/8"		13"		13 1/2"				
2094	11 1/4"	11 1/4"	11 3/4"	11 3/4"	12 1/2"	12 1/2"	13 1/2"	13 1/2"				
2345				12"		12 3/4"		13 1/2"		14"		
4007						12 3/4"		13 1/2"		14"		
4014				12"		12 3/4"		13 1/2"		14"		14 3/4"
7500										14 1/4"		

EUROPEAN MEASUREMENTS

Style #	Size 35 Length	Size 36 Length	Size 37 Length	Size 38 Length	Size 39 Length	Size 40 Length	Size 41 Length	Size 42 Length	Size 43 Length	Size 44 Length	Size 45 Length	Size 46 Length	Size 47.5 Length	Size 48 Length	Size 49 Length	Size 50 Length
Measured to the nearest 1/8"																
810K							12 1/2"		13 1/4"				14"			
1014																
1030						12 1/8"		12 5/8"			13 1/4"					
1149		10 1/2"		11"	11 1/2"		12"		12 1/2"			13 1/2"		14"		
S1244						11 1/2"				12 1/2"		13"				
1375			10"	10 1/4"	10 1/2"	10 7/8"	11"	11 1/4"	11 3/4"	12"	12 1/8"	12 1/4"	12 5/8"		13"	
1442								12"								14 1/2"
1474S								12 3/5"				13 1/2"			14 1/4"	
S1559				11 3/4"		12 1/4"		12 3/4"		13 1/4"		13 3/4"				
2602					12 1/2"		13 1/2"		14"			14 1/4"				
2900		11"			12"					13"						



Style #	Style	Size 5 / 5.5 Width	Size 6 / 6.5 Width	Size 7 / 7.5 Width	Size 8 / 8.5 Width	Size 9 / 9.5 Width	Size 10 / 10.5 Width	Size 11 / 11.5 Width	Size 12 / 12.5 Width	Size 13 / 13.5 Width	Size 14 / 14.5 Width	Size 15 Width	Size 16 Width
Measured to the nearest 1/8"													
100	forepart				4 5/8"	4 3/4"	4 7/8"	5 1/8"	5 1/4"	5 1/4"	5 3/8"		
	shank				3 1/2"	3 5/8"	3 3/4"	3 7/8"	4"	4"	4 1/8"		
	heel				3 1/2"	3 3/4"	3 5/8"	3 3/4"	4"	4"	4 1/8"		
109	forepart				5 1/4"		5 1/2"		5 5/8"				
	shank				3 1/2"		4"		4"				
	heel				3 5/8"		3 3/4"		3 7/8"				
127	forepart						5"		5"		5 1/4"		
	shank						3 1/2"		3 3/4"		3 7/8"		
	heel						3 3/4"		4"		4"		
132	forepart				4 3/4"	4 7/8"	5"	5"	5 1/4"		5 1/2"		
	shank				3 1/2"	3 5/8"	3 3/4"	3 7/8"	3 7/8"		4 1/8"		
	heel				3 1/2"	3 5/8"	3 3/4"	3 7/8"	4"		4 1/8"		
134 AR	forepart						n/a		5 1/4"		5 3/8"		
	shank						n/a		4"		4 1/8"		
	heel						n/a		4"		4 1/8"		
148	forepart				4 3/8"		4 5/8"		5 1/8"		5 1/2"		
	shank				3 3/8"		3 1/2"		3 7/8"		4 1/4"		
	heel				3 1/2"		3 5/8"		4"		4 1/4"		
148W	forepart		5"			5 1/4"				6 1/4"			
	shank		4 1/8"			4 1/4"				5"			
	heel		4 1/4"			4 3/8"				4 7/8"			
171C	forepart			4 1/2"		4 3/4"				5"		5 1/4"	
	shank			3 1/4"		3 1/2"				3 5/8"		3 5/8"	
	heel			3 3/8"		3 5/8"				3 3/4"		3 7/8"	
232	forepart				4 5/8"		4 7/8"		5"		5"		
	shank				3 3/8"		3 1/2"		3 1/2"		3 3/4"		
	heel				3 3/8"		3 1/2"		3 1/2"		3 5/8"		
268	forepart						5"		5 3/8"		5 1/2"		
	shank						3 1/2"		3 5/8"		3 3/4"		
	heel						3 1/2"		3 3/4"		3 5/8"		
269	forepart								5 1/4"		5 1/2"		
	shank								3 3/4"		3 7/8"		
	heel								3 3/4"		3 7/8"		
342C	forepart			5"		5 1/4"	5 1/4"		5 1/2"				
	shank			3 3/4"		3 7/8"	4"		4"				
	heel			3 7/8"		4"	4"		4 1/8"				
377K	forepart		5 1/4"		5 1/2"		5 5/8"		5 7/8"		6"		
	shank		4 1/4"		4 1/2"		4 1/2"		4 5/8"		4 3/4"		
	heel		4 1/8"		4 1/4"		4 3/8"		4 1/2"		4 5/8"		
417K	forepart		4 5/8"			5"				5 1/2"			
	shank		3 7/8"			3 7/8"				4 1/2"			
	heel		3 3/4"			3 7/8"				4 1/4"			
430	forepart						5"		5 1/4"		5 1/2"		
	shank						3 5/8"		3 3/4"		3 7/8"		
	heel						3 1/2"		3 5/8"		3 3/4"		
516K	forepart				5 1/2"		5 5/8"		5 7/8"		6"		
	shank				4"		4 1/8"		4 1/4"		4 3/8"		
	heel				4"		4 1/8"		4 1/4"		4 3/8"		
528K	forepart	5 1/2"			5 5/8"		5 3/4"		6"		6"		
	shank	4 1/2"			4 1/2"		4 3/4"		4 3/4"		4 7/8"		
	heel	4 1/2"			4 1/2"		4 3/4"		4 7/8"		5"		
625K	forepart		4 1/8"		4 1/4"		4 1/2"		4 5/8"				
	shank		3"		3"		3 1/8"		3 1/4"				
	heel		3 1/4"		3 3/8"		3 1/2"		3 5/8"				
669 KS	forepart					5"				5 5/8"			
	shank					3 7/8"				4 1/2"			
	heel					3 7/8"				4 3/8"			
700	forepart						5 1/8"		5 1/4"		5 1/4"		
	shank						3 1/2"		3 5/8"		3 3/4"		
	heel						3 1/2"		3 5/8"		3 3/4"		

SOLE WIDTHS

USA MEASUREMENTS

Style #	Style	Size 5 / 5.5 Width	Size 6 / 6.5 Width	Size 7 / 7.5 Width	Size 8 / 8.5 Width	Size 9 / 9.5 Width	Size 10 / 10.5 Width	Size 11 / 11.5 Width	Size 12 / 12.5 Width	Size 13 / 13.5 Width	Size 14 / 14.5 Width	Size 15 Width	Size 16 Width
Measured to the nearest 1/8"													
Q732	forepart									5 7/8"			
	shank									4 7/8"			
	heel									4 1/2"			
885K	forepart		4 3/8"			4 5/8"				5"			
	shank		3 1/2"			3 5/8"				3 7/8"			
	heel		3 1/2"			3 1/2"				3 3/4"			
950B	forepart		5 1/4"		5 1/2"		5 5/8"		5 7/8"		6"		
	shank		4 1/4"		4 3/8"		4 1/2"		4 1/2"		4 3/4"		
	heel		4 1/8"		4 1/4"		4 3/8"		4 1/2"		4 5/8"		
984K	forepart				5 1/8"	5 3/8"		5 1/2"			5 3/4"		
	shank				4"	4"		4 1/8"			4 1/8"		
	heel				3 3/4"	4"		4"			4 1/4"		
1012	forepart				5 1/4"		5 1/4"		5 1/2"		5 1/2"	5 5/8"	
	shank				4"		4 1/4"		4 1/4"		4 1/4"	4 3/8"	
	heel				3 3/4"		4"		4 1/8"		4 1/4"	4 1/4"	
1014	forepart					4 5/8"	4 3/4"		n/a				
	shank					3 3/8"	3 1/2"		n/a				
	heel					3 3/8"	3 1/2"		n/a				
1030	forepart	4 3/4"			5"			n/a					
	shank	3 1/2"			3 3/4"			n/a					
	heel	3 5/8"			3 3/4"			n/a					
1136	forepart						5"	5 1/8"		5 1/4"			
	shank						3 1/2"	3 5/8"		4"			
	heel						3 1/2"	3 1/2"		3 5/8"			
S1219	forepart					4 7/8"				5 1/8"			
	shank					3 1/2"				3 3/4"			
	heel					3 1/2"				3 3/4"			
S1219 Brush Heel	heel					3 1/2"		3 5/8"					
1249	forepart			5"		5 1/4"		5 3/8"		5 5/8"			
	shank			4"		4 1/4"		4 1/4"		4 3/8"			
	heel			4"		4"		4 1/8"		4 1/4"			
1275	forepart				5"		5 1/4"		5 1/2"		5 5/8"		
	shank				3 3/4"		4"		4"		4 1/4"		
	heel				3 5/8"		3 3/4"		3 7/8"		4 1/8"		
1276	forepart				5"		5"		5 3/8"		5 1/2"		
	shank				3 3/4"		3 3/4"		4"		4 1/8"		
	heel				3 3/4"		3 3/4"		3 7/8"		4"		
1286	forepart						5 3/4"	5 3/4"	5 3/4"				
	shank						4"	4"	4"				
	heel						4"	4"	4"				
1318	forepart						5 1/8"		5 3/8"		5 1/2"		
	shank						4"		4 1/8"		4 1/4"		
	heel						3 3/4"		3 7/8"		4"		
S1319	forepart						5 1/2"		5 5/8"	5 7/8"			
	shank						4 1/4"		4 1/2"	4 1/2"			
	heel						4 1/4"		4 3/8"	4 1/2"			
1328	forepart				n/a		n/a			6 1/8"			
	shank				n/a		n/a			5"			
	heel				n/a		n/a			5"			
1330	forepart	n/a			5 1/4"	5 3/8"				6 1/4"		n/a	
	shank	n/a			4 1/4"	4 1/4"				5"		n/a	
	heel	n/a			4 1/8"	4 1/4"				4 7/8"		n/a	
1330W	forepart				5"		5 1/4"			6 1/4"			
	shank				4 1/8"		4 1/4"			5"			
	heel				4 1/4"		4 3/8"			4 7/8"			
1374	forepart		5"		n/a	5 1/4"	n/a			6 1/4"			
	shank		4 1/8"		n/a	4 1/4"	n/a			5"			
	heel		4 1/4"		n/a	4 3/8"	n/a			4 7/8"			



Style #	Style	Size 5 / 5.5 Width	Size 6 / 6.5 Width	Size 7 / 7.5 Width	Size 8 / 8.5 Width	Size 9 / 9.5 Width	Size 10 / 10.5 Width	Size 11 / 11.5 Width	Size 12 / 12.5 Width	Size 13 / 13.5 Width	Size 14 / 14.5 Width	Size 15 Width	Size 16 Width
Measured to the nearest 1/8"													
1443	forepart				5"		5 1/4"		5 1/2"		5 5/8"		
	shank				3 3/4"		4"		4"		4 1/4"		
	heel				4 1/4"		4 3/8"		4 1/2"		4 5/8"		
1685	forepart				4 5/8"		4 7/8"			5 1/4"			
	shank				3 1/2"		3 1/2"			3 3/4"			
	heel				3 3/8"		3 1/2"			3 3/4"			
1705	forepart				4 7/8"		5"		5 1/8"		5 1/2"		
	shank				3 3/4"		3 7/8"		4"		4 1/8"		
	heel				3 5/8"		3 3/4"		4"		4"		
1716	forepart				5"		5 1/4"		5 1/2"		5 5/8"		
	shank				3 7/8"		4"		4 1/8"		4 1/4"		
	heel				3 3/4"		4"		4 1/8"		4 1/8"		
1743W	forepart				5 1/8"		5 1/4"		5 3/8"	5 5/8"			
	shank				4"		4 1/8"		4 1/4"	4 1/4"			
	heel				4"		4"		4 1/8"	4 1/4"			
1752	forepart				5"		5 1/4"		5 1/2"		5 5/8"		
	shank				4"		4"		4 3/8"		4 3/8"		
	heel				3 3/4"		4"		4 1/4"		4 3/8"		
1757	forepart				5 1/8"		5 1/4"		4 1/2"		5 5/8"		
	shank				4"		4 1/4"		4 3/8"		4 1/4"		
	heel				3 3/4"		4"		4 1/8"		4 1/8"		
1758	forepart					5 1/8"		5 1/4"		5 5/8"			
	shank					4"		4"		4 3/8"			
	heel					4"		4"		4 1/8"			
2021	forepart				5 1/4"		5 1/4"		5 1/2"		5 1/2"		
	shank				4"		4 1/4"		4 1/4"		4 1/4"		
	heel				3 3/4"		4"		4 1/4"		4 1/4"		
2055S	forepart	4 5/8"			4 3/4"	4 7/8"		5"		6"			
	shank	3 3/8"			3 1/2"	3 5/8"		3 3/4"		4 3/4"			
	heel	3 1/4"			3 3/8"	3 1/2"		3 5/8"		4 1/4"			
2055S (toplift)	heel	3 1/4"			3 3/8"	3 1/2"		3 1/2"		4 1/8"			
2060	forepart				5 1/4"		5 1/4"		5 1/2"		5 1/2"		
	shank				4"		4 1/4"		4 1/4"		4 1/4"		
	heel				3 7/8"		4"		4 1/4"		4 1/4"		
2062	forepart				4 7/8"		5 1/8"		5 1/4"		5 1/2"		
	shank				3 3/4"		3 7/8"		4"		4 1/4"		
	heel				3 5/8"		3 3/4"		3 7/8"		4"		
2070	forepart				5"		5 3/8"		5 1/2"	5 5/8"			
	shank				3 7/8"		4 1/4"		4 1/4"	4 1/4"			
	heel				3 7/8"		4"		4 1/8"	4 1/8"			
2074	forepart		4 1/2"		4 1/2"		4 3/4"		4 7/8"				
	shank		3 1/8"		3 1/4"		3 1/2"		3 1/2"				
	heel		3 1/4"		3 1/4"		3 1/2"		3 1/2"				
2094	forepart	4 5/8"			4 3/4"	5"		5"					
	shank	3 1/2"			3 1/2"	3 5/8"		3 3/4"					
	heel	3 3/8"			3 1/2"	3 1/2"		3 3/4"					
2345	forepart				5"		5 1/2"		5 1/2"		5 5/8"		
	shank				4 1/8"		4 1/2"		4 1/2"		5 1/2"		
	heel				3 7/8"		4"		4"		4 1/4"		
4007	forepart						5 1/4"		5 1/2"		5 1/2"		
	shank						4 1/4"		4 1/4"		4 1/4"		
	heel						4"		4 1/4"		4 1/4"		
4014	forepart				5"		5 3/8"		5 1/2"		5 5/8"		5 3/4"
	shank				3 7/8"		4"		4 3/8"		4 3/8"		4 1/2"
	heel				3 3/4"		4"		4 1/4"		4 1/4"		4 3/8"
7500	forepart										6"		
	shank										4 1/2"		
	heel										4 1/2"		

SOLE WIDTHS

EUROPEAN MEASUREMENTS

Style#	Style	Size 36 Length	Size 37 Length	Size 38 Length	Size 39 Length	Size 40 Length	Size 41 Length	Size 42 Length	Size 43 Length	Size 44 Length	Size 45 Length	Size 46 Length	Size 47 Length	Size 48 Length	Size 49 Length	Size 50 Length
Measured to the nearest 1/8"																
810K	forepart						5 1/4"		5 1/2"				5 3/4"			
	shank						4 1/8"		4 1/4"				4 1/2"			
	heel						4"		4"				4 1/4"			
1149	forepart	4 1/4"		4 3/8"	4 1/2"		4 3/4"		4 3/4"			5"		5"		
	shank	3 1/8"		3 1/4"	3 3/8"		3 1/2"		3 1/2"			3 5/8"		3 5/8"		
	heel	3"		3 1/8"	3 1/4"		3 3/8"		3 1/2"			3 1/2"		3 5/8"		
S1244	forepart					4 1/2"				4 3/4"		5"				
	shank					3 1/2"				3 5/8"		3 3/4"				
	heel					3 1/4"				3 1/2"		3 5/8"				
1375	forepart		3 7/8"	4"	4"	4"	4"	4 1/8"	4 1/8"	4 1/4"	4 1/4"	4 1/4"		4 1/2"	4 3/4"	
	shank		2 3/4"	2 7/8"	2 7/8"	3"	3"	3"	3"	3 1/8"	3 1/4"	3 1/4"		3 1/4"	3 1/4"	
	heel		2 3/4"	2 7/8"	3"	3"	3"	3"	3"	3 1/8"	3 1/4"	3 1/4"		3 3/8"	3 3/8"	
1442	forepart							5"								6"
	shank							4 3/8"								5 1/8"
	heel							4"								5"
1474S	forepart							4 3/4"				5"			5 1/8"	
	shank							3 3/8"				3 1/2"			3 3/4"	
	heel							3 3/4"				4 1/8"			4 3/8"	
S1559	forepart			5 1/2"		5 5/8"		5 3/4"		5 7/8"		6"				
	shank			4 1/2"		4 1/2"		4 1/2"		4 5/8"		4 3/4"				
	heel			4 1/2"		4 1/2"		4 1/2"		4 5/8"		4 7/8"				
2602	forepart				5 1/2"		5 3/4"		6"			6 1/4"				
	shank				4 1/2"		4 1/2"		4 5/8"			4 3/4"				
	heel				4 1/4"		4 1/2"		4 5/8"			4 3/4"				
2900	forepart	4 1/2"			4 7/8"					5"						
	shank	3 3/8"			3 7/8"					3 3/4"						
	heel	3 1/4"			3 1/2"					3 3/4"						



BONDING INFORMATION

Bonding Vibram Soling Materials

Vibram provides soling components in a wide assortment of compounds. There is a different bonding process for each of these compounds, which also changes depending on the surface to which the sole is being bonded. We hope the following will help solve some of these issues.

Identifying Materials

The first step in selecting an adhesive is identifying the materials that need to be bonded. Differentiating PVC and TPR soles is often difficult because they look and feel similar. There is a test called the Beilstein method that will help you differentiate between the two materials. The Beilstein method involves the use of a lighter (or a small butane torch) and a 12" piece of 10 or 12 gauge copper. You will need approximately 3" of wire from which the insulation has been stripped. Place the end of the copper wire in the flame until it becomes red. Immediately, place the wire on the surface of the sole for a couple of seconds. Then place the wire back under the flame. If the flame turns to a green color, then you have a PVC material.

Preparation of Surfaces

Oils contaminate the sole during sanding, making a good bond more difficult to achieve. Therefore, after sanding the new replacement sole and the old midsole on the shoe, clean both well with thinner to eliminate some of the oils. Once the surface is cleaned, critical attention must be paid to the roughing of the replacement sole. Using a sharp sanding belt, evenly sand the new replacement and the midsole out to the edges. Fresh roughing is important; make certain you apply your adhesive within 72 hours of sanding.

Application of Adhesive

Many Vibram outsoles are designed for high abrasion. We suggest the use of a primer to enhance the bond. You may use a combination of adhesive and thinner to prime the outsoles.

Drying Times

There is an inverse relationship between temperature and drying time. As the temperature increases, the drying time decreases (I.E. bonding happens more quickly at higher temperatures) and as the temperature decreases, drying time increases. There is also an inverse relationship between humidity and drying time. As humidity increases, drying slows. Consideration should also be taken regarding the outside temperature. Most adhesives will thicken and even gel at very low temperatures. Adhesives that have been exposed to cold during shipment and warehousing should be allowed to warm before using in order to maintain the same application and drying properties. Allow these to store in temperatures greater than 70° F.

Open Time

Once an adhesive dries, the amount of open time you have to put the two substrates together varies by the adhesive used. Temperature as well as humidity will affect the open time.

Some points to keep in mind:

1. If the product is put into a press, be certain there is sufficient pressure to get the complete fusing of the two materials.
2. Allow at least 15 seconds in the press to get a sufficient bond.
3. If the open time has expired, the adhesive can be heat-activated using a hot air blower, a heat lamp, etc.





**YOUR CONNECTION
TO EARTH**

Vibram Corporation

840 Commonwealth Ave
Boston, MA 02215
978.318.0000
www.vibram.com